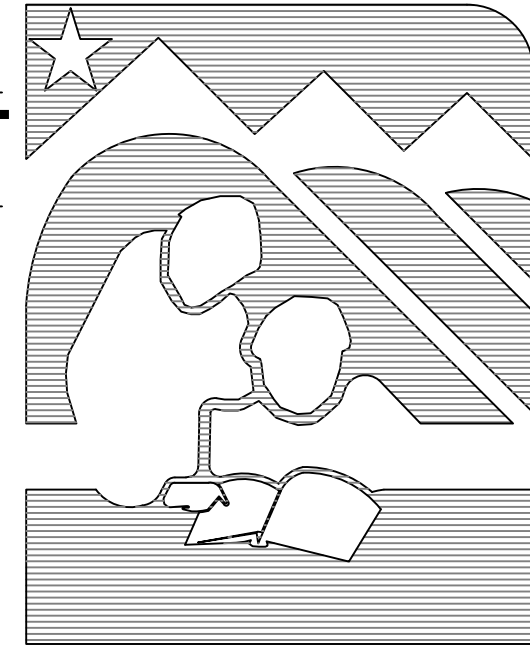


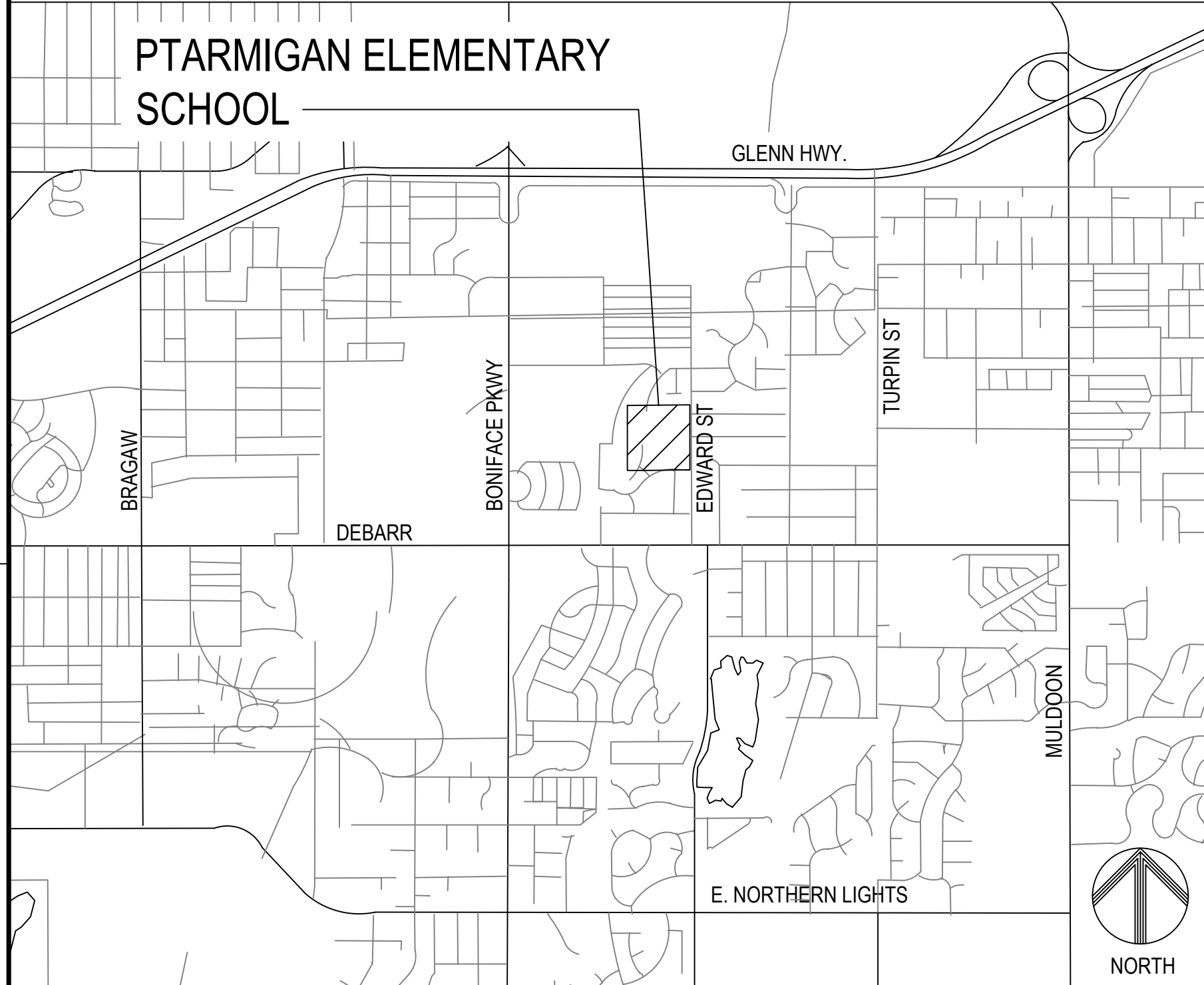
**ANCHORAGE
SCHOOL
DISTRICT**



ASD PTARMIGAN ELEMENTARY SCHOOL INTRUSION DETECTION SYSTEM REPLACEMENT ASD PROJECT NO. 999229

SPACE RESERVED FOR MOA PERMIT STAMP

LOCATION MAP - NOT TO SCALE



DRAWING INDEX

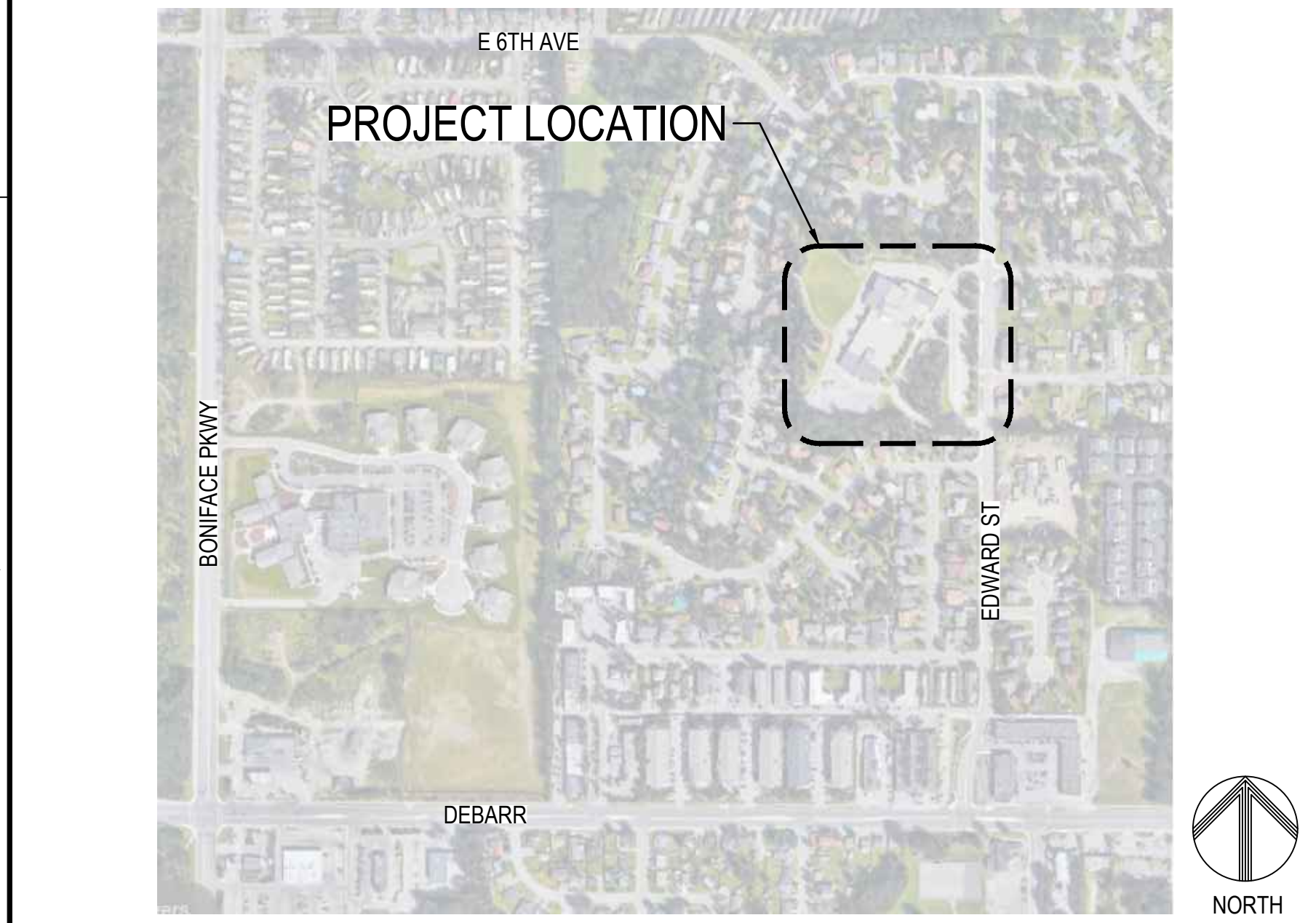
SHEET NO.	SHEET TITLE
G001	COVER SHEET
E001	ELECTRICAL LEGEND, ABBREVIATIONS, AND NOTES
E003	REFLECTED CEILING PLAN REFERENCE
E101	INTRUSION DETECTION DEMOLITION PLAN - WEST
E102	INTRUSION DETECTION DEMOLITION PLAN - EAST
E201	INTRUSION DETECTION PLAN - WEST
E202	INTRUSION DETECTION PLAN - EAST
E301	SCHEDULES
E401	INTRUSION DETECTION SYSTEM TYPICAL RISER DIAGRAM

PROJECT OVERVIEW

THE WORK ASSOCIATED WITH THIS PROJECT CONSISTS OF A COMPLETE REPLACEMENT OF THE PTARMIGAN ELEMENTARY SCHOOL INTRUSION DETECTION SYSTEM AS OUTLINED BELOW:

- DEMOLISH THE EXISTING GE INTERLOGIX ACCESS CONTROL UNIT, WHICH FUNCTIONS AS THE INTRUSION DETECTION SYSTEM HEAD END, AND REPLACE WITH A NAPCO GEMINI C SERIES BURGLARY CONTROL PANEL.
- DEMOLISH THE EXISTING DIGITAL ALARM COMMUNICATION TRANSMITTERS (DACT) PANEL. REPLACE WITH THE DACT THAT IS INTEGRAL TO THE NAPCO BURGLARY CONTROL PANEL. INTERFACE THE NEW BURGLARY CONTROL PANEL WITH THE EXISTING SIMPLEX 4100 FIRE ALARM CONTROL PANEL (FACP). THE NEW DACT SHALL RETAIN THE SAME FUNCTIONALITY BY REPORTING THE FACP ALARM, TROUBLE, FLOW, AND SUPERVISORY SIGNALS OUT TO THE EXISTING CENTRAL STATION DIGITAL ALARM RECEIVER.
- DEMOLISH THE EXISTING MAINTENANCE KEYPAD THAT IS USED TO PROGRAM THE DACT AND REPLACE WITH A NEW NAPCO GEMC KEYPAD.
- REPLACE ALL EXISTING GLASS BREAK DETECTORS, MOTION SENSORS, KEYPADS, TERMINATION CABINETS, AND ALL ASSOCIATED WIRING UNLESS NOTED OTHERWISE IN THE DRAWINGS. ALL DOOR CONTACTS ASSOCIATED WITH THE INTRUSION DETECTION SYSTEM SHALL BE TESTED FOR FUNCTIONALITY AND REPLACED ONLY IF NON-FUNCTIONAL. OTHERWISE RETAIN ALL DOOR CONTACTS.
- INTERFACE WITH THE EXISTING BOILER FAIL RELAYS, COMMON FUEL OIL ALARM, GENERATOR RUN OUTPUT, GENERATOR TROUBLE OUTPUT, PHASE LOSS RELAY, AND BUILDING FREEZE SENSOR. TEST EACH RELAY AND SENSOR FOR FUNCTIONALITY BEFORE RECONNECTING TO THE NEW INTRUSION DETECTION SYSTEM.
- PROVIDE HANDS-ON OPERATIONAL TRAINING CONDUCTED BY THE MANUFACTURER'S REPRESENTATIVE FOR ON-SITE FACILITY STAFF. SUBMIT TRAINING SCHEDULES TO THE OWNER FOR APPROVAL NOT LESS THAN TWO WEEKS PRIOR TO TRAINING SESSION.

PROJECT AREA MAP - NOT TO SCALE

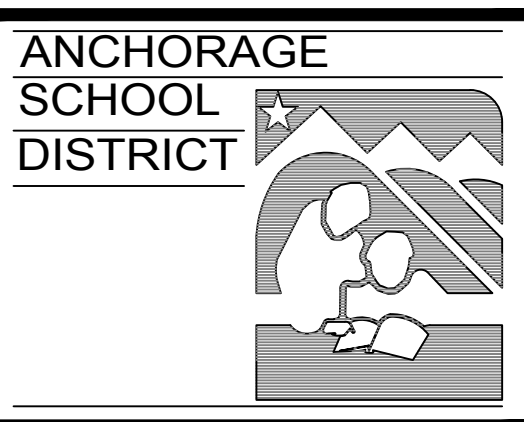


FACILITY STREET ADDRESS & LEGAL DESCRIPTION

STREET ADDRESS: 888 EDWARD ST, ANCHORAGE, AK 99504
LEGAL DESCRIPTION: PTARMIGAN SCHOOL SITE T13N R3W SEC 14 NE4 SE4

NOTIFICATION OF CHILD OCCUPIED FACILITY:
PORTIONS OF THIS BUILDING ARE CLASSIFIED AS A CHILD OCCUPIED FACILITY IN ACCORDANCE WITH 40 CFR 745 AND LEAD-BASED PAINT HAS BEEN IDENTIFIED ON COMPONENTS TO BE DISTURBED IN THOSE AREAS. PERSONNEL PERFORMING WORK IN THESE AREAS MUST COMPLY WITH THE REQUIREMENTS OF 40 CFR 745, INCLUDING TRAINING, WORK PRACTICES AND CLEANING OF THE SPECIFIC INFORMATION CONCERNING DISTURBING, REMOVING, AND DISPOSING OF LEAD MATERIALS AND THE INSTALLATION OF NEW MATERIALS OR COMPONENTS. THIS NOTIFICATION IS PROVIDED IN ACCORDANCE WITH EPA AND OSHA REQUIREMENTS.

NOTIFICATION OF POTENTIAL HAZARDS:
ASBESTOS, LEAD, AND OTHER HAZARDOUS MATERIALS ARE PRESENT IN THE BUILDING THAT MAY IMPACT THE WORK OF ALL TRADES. REGULATED AIR CONTAMINANTS, INCLUDING ASBESTOS AND LEAD, ARE ALSO PRESENT IN SETTLED AND CONCEALED DUST IN AND ON ARCHITECTURAL, STRUCTURAL, MECHANICAL, AND ELECTRICAL COMPONENTS OR SYSTEMS THROUGHOUT THE BUILDING. ALL TRADES SHALL COORDINATE WITH OTHER TRADES AND CONDUCT THEIR WORK TO PREVENT WORKER EXPOSURE OR SITE CONTAMINATION. REFER TO THE REQUIREMENTS OF THE RFO FOR SPECIFIC INFORMATION CONCERNING DISTURBING, REMOVING, AND DISPOSING OF THESE MATERIALS AND THE INSTALLATION OF NEW MATERIALS OR COMPONENTS. THIS NOTIFICATION IS PROVIDED IN ACCORDANCE WITH EPA AND OSHA REQUIREMENTS.



**ASD PTARMIGAN
ELEMENTARY SCHOOL
INTRUSION DETECTION
SYSTEM REPLACEMENT**

INVITATION TO BID

REV	DATE	DESCRIPTION

PROJ. NO. 232597
DRAWN JHZ
CHECKED LRH
DATE 02/20/24

© COFFMAN ENGINEERS INC.
SHEET TITLE:
COVER SHEET

SHEET NO:
G001

P:\ANC23\JOBS\232597 ASD INTRUSION DET-PTARMIGAN DWG\G001 COVER SHEET.DWG G001 COVER SHEET - STEER, ANDREW - LAST SAVED: February 20, 2024 - PLOT DATE: 2/20/24

PROJECT NOTES:

1. THE ELECTRICAL INSTALLATION SHALL COMPLY WITH THE 2020 EDITION OF THE NATIONAL ELECTRIC CODE, NFPA 72, STATE AND LOCAL AMENDMENTS, AND NECA STANDARDS OF INSTALLATION.
2. ALL SECURITY EQUIPMENT AND MATERIALS SHALL BE LISTED AND LABELED FOR THEIR INTENDED APPLICATION BY A NATIONALLY RECOGNIZED TESTING LABORATORY ACCEPTABLE TO THE AUTHORITY HAVING JURISDICTION.
3. EXISTING CONDITIONS SHOWN ON THESE DRAWING ARE BASED ON RECORD DRAWINGS AND A NON-DESTRUCTIVE SITE INVESTIGATION OF THE FACILITY. THERE IS NO WARRANTY OR GUARANTEE AS TO THE ACCURACY OF THE INFORMATION SHOWN HEREIN. THE CONTRACTOR SHALL FIELD VERIFY EXISTING CONDITIONS AND ALL ITEMS SCHEDULED FOR DEMOLITION PRIOR TO THE START OF WORK.
4. CONTRACTOR SHALL VERIFY LOCATION OF ALL EXISTING UTILITIES AND STRUCTURES AFFECTING THE WORK. NOTIFY THE PROJECT MANAGER IN WRITING OF ANY DISCREPANCIES BETWEEN EXISTING CONDITIONS AND THOSE SHOWN IN THE CONTRACT DOCUMENTS WHICH ADVERSELY IMPACT THE WORK.
5. CONTRACTOR SHALL MAINTAIN A RED-LINE SET OF CONSTRUCTION DOCUMENTS DURING CONSTRUCTION. RED-LINE DRAWINGS SHALL BE SUBMITTED TO THE OWNER UPON PROJECT COMPLETION.
6. ALL WIRING INSTALLED IN UNHEATED OR EXTERIOR SPACES SHALL BE XHHW-2. INTERIOR WIRING MAY BE THHW/THHN UNLESS NOTED OTHERWISE.
7. POWER CONDUCTORS SHALL BE #12 AWG COPPER MINIMUM OR AS SHOWN ON DRAWINGS. HOME RUN CONDUCTORS SHALL BE #10 AWG COPPER MINIMUM OR AS REQUIRED BY THE NEC. THE MINIMUM SIZE FOR 20A BRANCH CIRCUITS MEASURED FROM THE PANELBOARD TO THE FURTHEST DEVICE ON THE CIRCUIT UNLESS NOTED ON DRAWINGS:
 #10 AWG CONDUCTORS FOR 120V BRANCH CIRCUITS GREATER THAN 75'
 #8 AWG CONDUCTORS FOR 120V BRANCH CIRCUITS GREATER THAN 175'
 INCREASE GROUND CONDUCTOR SIZE PER NEC FOR 15A OR 20A BRANCH CIRCUITS TRANSITION TO #12 AWG WITHIN 15' OF DEVICE IF A SMALLER CONDUCTOR IS REQUIRED FOR DEVICE TERMINATION.
8. ALL SECURITY WIRING SHALL BE PLENUM RATED.
9. PIGTAIL, T-TAP, AND SPLICE CONNECTIONS ARE PROHIBITED FOR ALL SIGNALING LINE WIRING.
10. SEQUENCE WORK TO MINIMIZE OUTAGES TO THE TELECOMMUNICATIONS AND ELECTRICAL EQUIPMENT. COORDINATE SCHEDULED OUTAGES WITH THE OWNER.
11. MINIMIZE OUTAGES TO THE DACT. COORDINATE ANY SCHEDULED OUTAGES WITH THE OWNER. THE DACT IS THE PRIMARY SOURCE OF COMMUNICATION TO THE CENTRAL MONITORING STATION FOR THE FIRE ALARM SYSTEM. OUTAGES TO THE DACT OF GREATER THAN 8 HOURS SHALL BE REPORTED TO THE AHJ PER NFPA 72 SECTION 10.21.4. IF REQUIRED COORDINATE FIRE WATCH REQUIREMENTS WITH OWNER DURING OUTAGE.
12. SEQUENCE WORK TO MINIMIZE OUTAGES TO THE INTRUSION DETECTION SYSTEM HEAD END. COORDINATE OUTAGES GREATER THAN 8 HOURS WITH OWNER. COORDINATE WITH THE OWNER TO DETERMINE THE REQUIREMENTS FOR SECURITY WATCH DURING EXTENDED OUTAGES.
13. ANY PENETRATION OF THE BUILDING VAPOR OR MOISTURE BARRIER SYSTEM SHALL BE APPROPRIATELY SEALED TO RETAIN THE INTEGRITY OF THE WALL SYSTEM. THIS INCLUDES, BUT IS NOT LIMITED TO, CONDUITS AND BACKS OF ELECTRICAL BOXES.
14. SEAL ALL RACEWAYS SUBJECT TO MOISTURE TRANSFER OR TRANSITIONING FROM INTERIOR TO EXTERIOR OF THE BUILDING IN ACCORDANCE WITH NEC. REFERENCE NEC 225.27, 230.8, 300.5(G), AND 300.7(A).
12. CUT AND PATCH THE EXISTING CEILING AND WALLS AS REQUIRED TO INSTALL NEW RACEWAY. ANY PATCHES SHALL BE FINISHED TO MATCH THE EXISTING ADJACENT SURFACES. REPLACE ANY DAMAGED CEILING TILES AS REQUIRED.
13. DRAWINGS ARE SCHEMATIC ONLY AND DO NOT SHOW ALL CONDUIT AND CONNECTIONS BETWEEN RESPECTIVE DEVICES AND FIXTURES. CONTRACTOR SHALL DETERMINE THE EXACT ROUTING OF CONDUIT, CABLE, AND WIRING CONNECTIONS BETWEEN RESPECTIVE DEVICES AND FIXTURES FOR A COMPLETE AND OPERATIONAL SYSTEM.
14. PROTECT ALL MATERIALS AND EQUIPMENT DURING THE ENTIRE DURATION OF CONSTRUCTION WORK AGAINST CONTAMINATION OR DAMAGE. REPLACE OR REPAIR TO ORIGINAL MANUFACTURED CONDITION ANY ITEMS DAMAGED DURING CONSTRUCTION. IMMEDIATELY REPORT TO CONSTRUCTION ADMINISTRATOR ANY ITEMS FOUND DAMAGED PRIOR TO COMMENCING CONSTRUCTION.
15. THE OWNER SHALL HAVE FIRST RIGHT OF REFUSAL FOR ALL SALVAGEABLE MATERIALS. THE CONTRACTOR SHALL DELIVER SALVAGED MATERIALS TO A LOCATION AS DIRECTED BY THE OWNER IN ACCORDANCE WITH THE CONTRACT DOCUMENTS.
16. THE CONTRACTOR SHALL BE RESPONSIBLE FOR PROVIDING BATTERY AND VOLTAGE DROP CALCULATIONS FOR THE INTRUSION DETECTION SYSTEM PER THE DIVISION 28 SPECIFICATION.

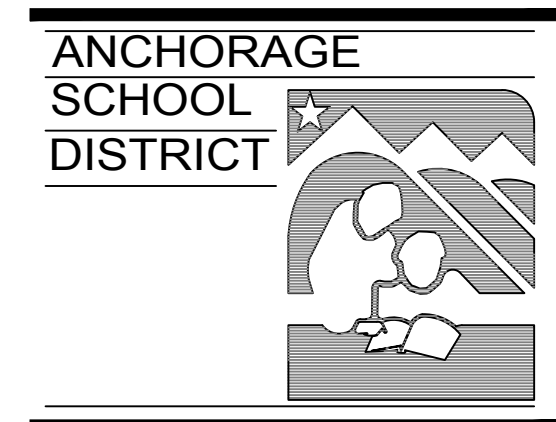
ELECTRICAL ABBREVIATIONS

ABBREVIATION	DEFINITION
ACU	ACCESS CONTROL UNIT
AFF	ABOVE FINISHED FLOOR
AG	ABOVE GRADE
ASD	ANCHORAGE SCHOOL DISTRICT
BCP	BURGLARY CONTROL PANEL
BF	BUILDING FREEZE
BLDG	BUILDING
BO	BOILER FAIL
BPS	BOXED POWER SUPPLY - FIRE ALARM
BSLC	BURGLARY SIGNALING LINE CIRCUIT
C	CABLE; CONDUIT; COIL
CAT	CATEGORY
CTL	CONTROL
D, (D)	DEMOLISH
DACT	DIGITAL ALARM COMMUNICATION TRANSMITTERS
DC	DOOR CONTACT
DDC	DIRECT DIGITAL CONTROLLER
DWG	DRAWING
EA	EACH
EL	ELEVATION
ELEC	ELECTRICAL
EQUIP	EQUIPMENT
E, EXIST	EXISTING
ETR	EXISTING TO REMAIN
EZM	EXPANSION ZONE MODULE
FACP	FIRE ALARM CONTROL PANEL
FO	FUEL OIL
GALV	GALVANIZED
GB	GLASS BREAK
GND	GROUND
GR	GENERATOR RUN
GRS	GALVANIZED RIGID STEEL
GT	GENERATOR TROUBLE
IKE	INTERNET KEY EXCHANGE
IN	INCH
JB OR J-BOX	JUNCTION BOX
KP	KEYPAD
MAX	MAXIMUM
MIN	MINIMUM
MOA	MUNICIPALITY OF ANCHORAGE
MS	MOTION SENSOR
NEC	NATIONAL ELECTRIC CODE
NECA	NATIONAL ELECTRICAL CONTRACTORS ASSOCIATION
NFPA	NATIONAL FIRE PROTECTION ASSOCIATION
NTS	NOT TO SCALE
PH	PHASE
PL	PHASE LOSS
RIM	RELAY INTERFACE MODULE
RM	ROOM
RRM	REMOTE RELAY MODULE
SPEC	SPECIFICATIONS
SYS	SYSTEM
TYP	TYPICAL

ELECTRICAL SYMBOLS LEGEND

EXISTING TO REMAIN	DEMO	NEW	DESCRIPTION
			PANELBOARD
			MOTION SENSOR - CEILING MOUNTED
			DOOR CONTACT - RECESSED IN FRAME
			DOOR CONTACT - SURFACE MOUNTED
			FIRE ALARM CONTROL PANEL
			RELAY INTERFACE MODULE
			REMOTE RELAY MODULE
			DIGITAL ALARM COMMUNICATION TRANSMITTERS
			ACCESS CONTROL UNIT - SECURITY HEADEND
			GLASS BREAK DETECTOR
			SECURITY SYSTEM KEY PAD
			BUILDING FREEZE SENSOR
			BOILER FAIL RELAY
			PHASE LOSS RELAY
			GENERATOR RUN STATUS OUTPUT
			GENERATOR TROUBLE OUTPUT
			COMMON FUEL OIL ALARM
			SECURITY CONTROL PANEL
			SINGLE POINT ZONE MODULE

SPACE RESERVED FOR MOA PERMIT STAMP



ASD PTARMIGAN ELEMENTARY SCHOOL INTRUSION DETECTION SYSTEM REPLACEMENT

INVITATION TO BID

REV	DATE	DESCRIPTION

PROJ. NO.	232597
DRAWN	JHZ
CHECKED	LRH
DATE	02/20/24

© COFFMAN ENGINEERS INC.

SHEET TITLE:

ELECTRICAL LEGEND, ABBREVIATIONS, AND NOTES

SHEET NO:

E001

NOTIFICATION OF CHILD OCCUPIED FACILITY:
 PORTIONS OF THIS BUILDING ARE CLASSIFIED AS A CHILD OCCUPIED FACILITY IN ACCORDANCE WITH 40 CFR 745 AND LEAD-BASED PAINT HAS BEEN IDENTIFIED ON COMPONENTS TO BE DISTURBED IN THOSE AREAS. PERSONNEL PERFORMING WORK IN THESE AREAS MUST COMPLY WITH THE REQUIREMENTS OF 40 CFR 745, INCLUDING TRAINING, WORK PRACTICES AND CLEANING OF THE SPECIFIC INFORMATION CONCERNING DISTURBING, REMOVING, AND DISPOSING OF LEAD MATERIALS AND THE INSTALLATION OF NEW MATERIALS OR COMPONENTS. THIS NOTIFICATION IS PROVIDED IN ACCORDANCE WITH EPA AND OSHA REQUIREMENTS.

NOTIFICATION OF POTENTIAL HAZARDS:
 ASBESTOS, LEAD, AND OTHER HAZARDOUS MATERIALS ARE PRESENT IN THE BUILDING THAT MAY IMPACT THE WORK OF ALL TRADES. REGULATED AIR CONTAMINANTS, INCLUDING ASBESTOS AND LEAD, ARE ALSO PRESENT IN SETTLED AND CONCEALED DUST IN AND ON ARCHITECTURAL, STRUCTURAL, MECHANICAL, AND ELECTRICAL COMPONENTS OR SYSTEMS THROUGHOUT THE BUILDING. ALL TRADES SHALL COORDINATE WITH OTHER TRADES AND CONDUCT THEIR WORK TO PREVENT WORKER EXPOSURE OR SITE CONTAMINATION. REFER TO THE REQUIREMENTS OF THE RFO FOR SPECIFIC INFORMATION CONCERNING DISTURBING, REMOVING, AND DISPOSING OF THESE MATERIALS AND THE INSTALLATION OF NEW MATERIALS OR COMPONENTS. THIS NOTIFICATION IS PROVIDED IN ACCORDANCE WITH EPA AND OSHA REQUIREMENTS.

P:\ANC23\JOBS\232597 ASD INTRUSION DET-PTARM AND BEGO\0 DWGS\ELECTRICAL LEGEND, ABBREVIATIONS, AND NOTES.DWG E001 ELECTRICAL LEGEND, ABBREVIATIONS, AND NOTES, STEER, ANDREW, LAST SAVED: February 20, 2024 - PLOT DATE: 2/20/24

NOTIFICATION OF CHILD OCCUPIED FACILITY:
 PORTIONS OF THIS BUILDING ARE CLASSIFIED AS A CHILD OCCUPIED FACILITY IN ACCORDANCE WITH 40 CFR 745 AND LEAD-BASED PAINT HAS BEEN IDENTIFIED ON COMPONENTS TO BE DISTURBED IN THOSE AREAS. PERSONNEL PERFORMING WORK IN THESE AREAS MUST COMPLY WITH THE REQUIREMENTS OF 40 CFR 745, INCLUDING TRAINING, WORK PRACTICES AND CLEANING OF THE SPECIFIC INFORMATION CONCERNING DISTURBING, REMOVING, AND DISPOSING OF LEAD MATERIALS AND THE INSTALLATION OF NEW MATERIALS OR COMPONENTS. THIS NOTIFICATION IS PROVIDED IN ACCORDANCE WITH EPA AND OSHA REQUIREMENTS.

NOTIFICATION OF POTENTIAL HAZARDS:
 ASBESTOS, LEAD, AND OTHER HAZARDOUS MATERIALS ARE PRESENT IN THE BUILDING THAT MAY IMPACT THE WORK OF ALL TRADES. REGULATED AIR CONTAMINANTS, INCLUDING ASBESTOS AND LEAD, ARE ALSO PRESENT IN SETTLED AND CONCEALED DUST IN AND ON ARCHITECTURAL, STRUCTURAL, MECHANICAL, AND ELECTRICAL COMPONENTS OR SYSTEMS THROUGHOUT THE BUILDING. ALL TRADES SHALL COORDINATE WITH OTHER TRADES AND CONDUCT THEIR WORK TO PREVENT WORKER EXPOSURE OR SITE CONTAMINATION. REFER TO THE REQUIREMENTS OF THE RFQ FOR SPECIFIC INFORMATION CONCERNING DISTURBING, REMOVING, AND DISPOSING OF THESE MATERIALS AND THE INSTALLATION OF NEW MATERIALS OR COMPONENTS. THIS NOTIFICATION IS PROVIDED IN ACCORDANCE WITH EPA AND OSHA REQUIREMENTS.

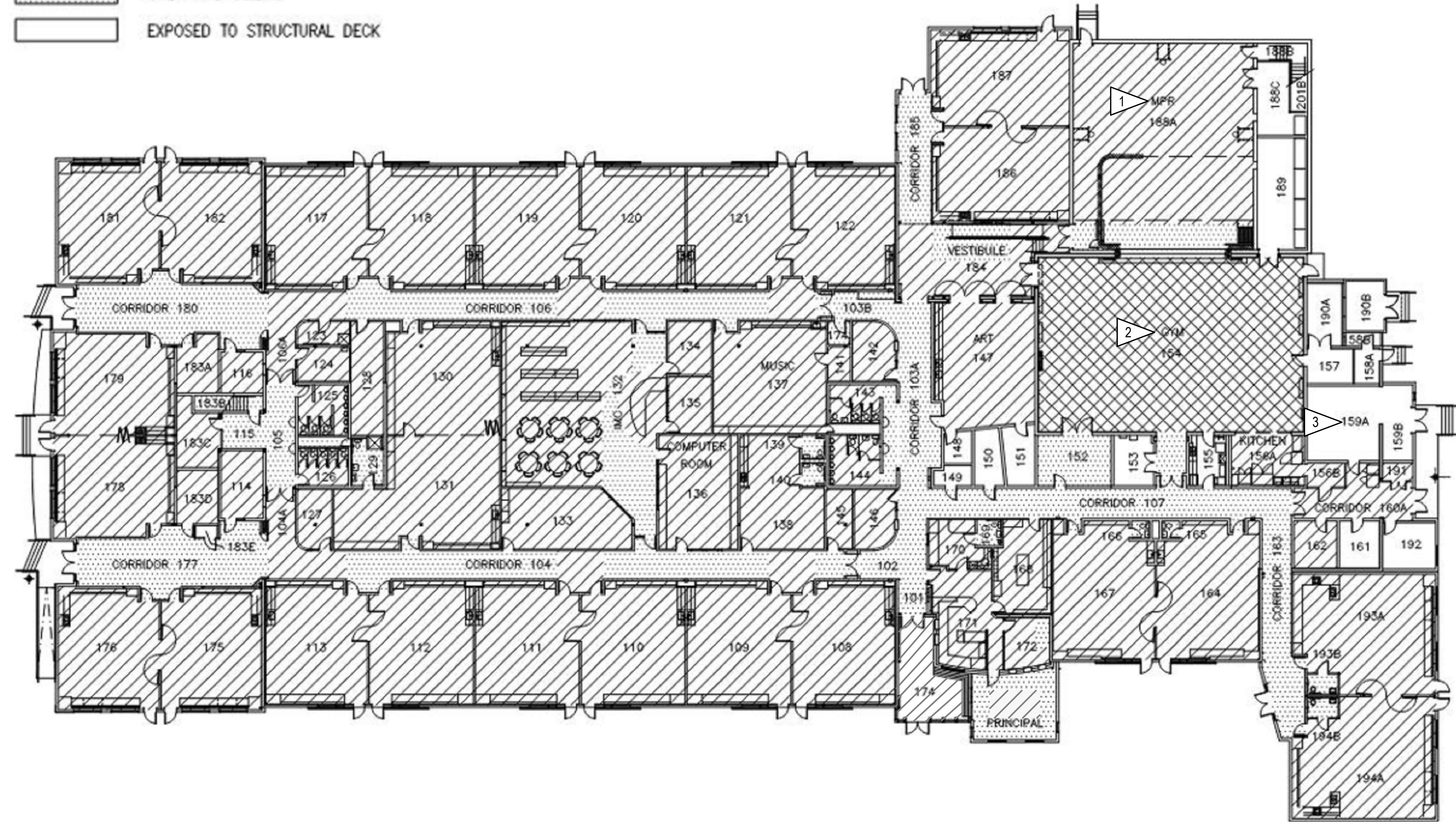
SPACE RESERVED FOR MOA PERMIT STAMP

COFFMAN ENGINEERS
 800 F Street
 Anchorage, AK 99501
 ph 907.276.6664
 www.coffman.com AECC249

CEILING TYPE LEGEND:

CEILING HEIGHT IS 10'-0" AFF OR LOWER, UNLESS OTHERWISE NOTED

- DROPPED 2'x4' ACT GRID CEILING
- GLUE-ON ACOUSTICAL TILE CEILING
- GWB HARD CEILING
- EXPOSED TO STRUCTURAL DECK

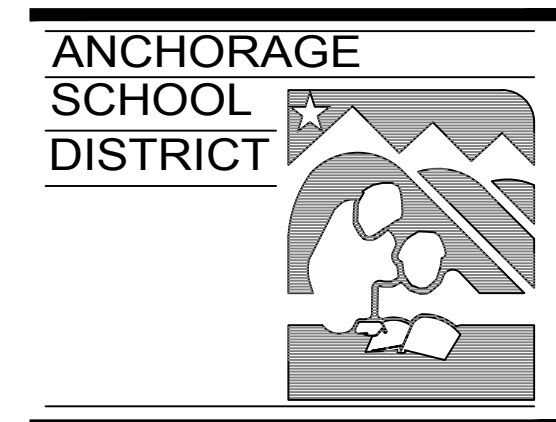


GENERAL NOTES:

1. REFLECTED CEILING PLAN IS SHOWN FOR REFERENCE ONLY FOR DETERMINING DEVICE MOUNTING AND RACEWAY ROUTING. CONTRACTOR SHALL FIELD VERIFY EXISTING CONDITIONS TO OPTIMIZE DEVICE MOUNTING AND RACEWAY ROUTING.
2. EXISTING CONDUIT CONTAINING SECURITY WIRING MAY BE REUSED IF IN GOOD CONDITION.
3. EXISTING J-HOOKS MAY BE REUSED IF THEY ARE DEDICATED TO SECURITY WIRING. IN ADDITION, NEW J-HOOKS MAY REPLACE CONDUIT ABOVE THE ACCESSIBLE CEILING FOR LOW VOLTAGE WIRING IF DEDICATED TO SECURITY.
4. ALL NEW NON-ADDRESSABLE SECURITY DEVICES SHALL EACH BE CONNECTED TO AN ADDRESSABLE SINGLE POINT ZONE MODULE TO OBTAIN A FULLY ADDRESSABLE SECURITY SYSTEM. THE NEW DEVICES SHALL BE REPLACED IN THE SAME LOCATION AS THE EXISTING DEVICES AND THE SINGLE POINT ZONE MODULES SHALL BE LOCATED AS CLOSE AS POSSIBLE TO THE DEVICE. WHERE DEVICES ARE INSTALLED IN AREAS WITHOUT SUSPENDED ACT GRID OR EXPOSED STRUCTURE THE SINGLE POINT ZONE MODULE SHALL BE INSTALLED IN THE NEAREST ACCESSIBLE CEILING SPACE. THE SHOP DRAWINGS SHALL CLEARLY IDENTIFY ALL SINGLE POINT ZONE MODULE LOCATIONS.
5. CEILING HEIGHT IS 10'-0" AFF OR LOWER, UNLESS OTHERWISE NOTED.

SHEET NOTES:

1. CEILING HEIGHT IS 16'-0" AFF.
2. CEILING HEIGHT IS 18'-0" AFF.
3. CEILING HEIGHT GREATER THAN +10' AFF.



ASD PTARMIGAN ELEMENTARY SCHOOL INTRUSION DETECTION SYSTEM REPLACEMENT

INVITATION TO BID

REV	DATE	DESCRIPTION

REV	DATE	DESCRIPTION

© COFFMAN ENGINEERS INC.

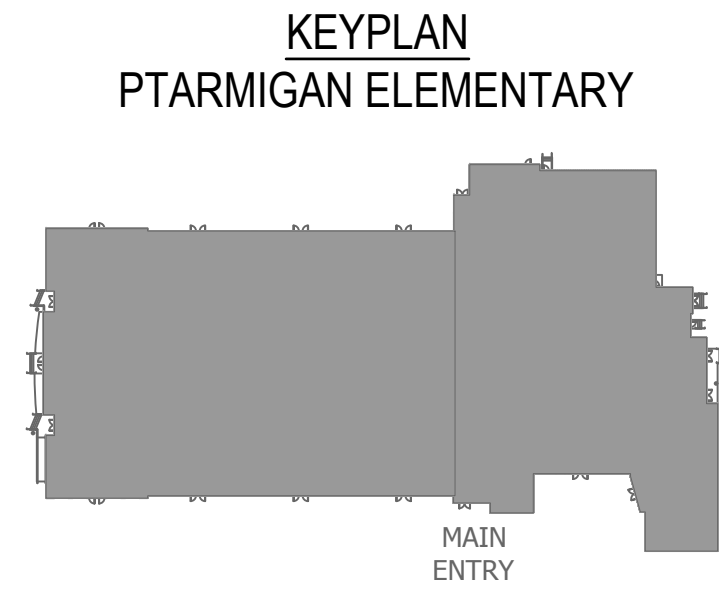
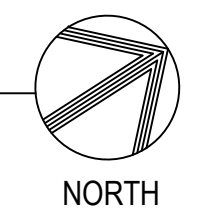
SHEET TITLE:

REFLECTED CEILING PLAN REFERENCE

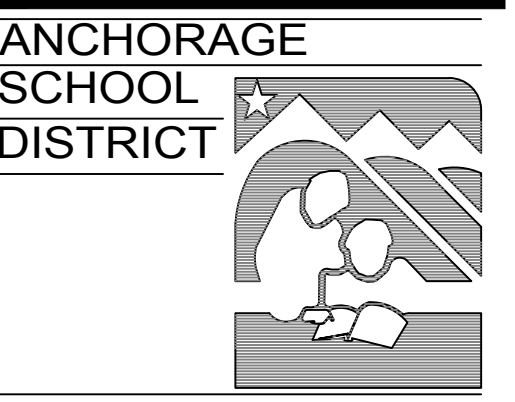
SHEET NO:

E003

A1 REFLECTED CEILING PLAN REFERENCE
 E003 SCALE: NTS



P:\ANC23\JOBS\232597 ASD INTRUSION DET-PTARM AND BEGICH10 DWGSEPTARMIGAN DWGSEI003 REFLECTED CEILING PLAN DWGSEI003 REFLECTED CEILING PLAN : STEER, ANDREW - LAST SAVED: February 16, 2024 - PLOT DATE: 2/20/24



ASD PTARMIGAN ELEMENTARY SCHOOL INTRUSION DETECTION SYSTEM REPLACEMENT

INVITATION TO BID

REV	DATE	DESCRIPTION

PROJ. NO.	232597
DRAWN	JHZ
CHECKED	LRH
DATE	02/20/24

© COFFMAN ENGINEERS INC.

SHEET TITLE:

INTRUSION DETECTION DEMOLITION PLAN - WEST

SHEET NO:

E101

SPACE RESERVED FOR MOA PERMIT STAMP

GENERAL NOTES:

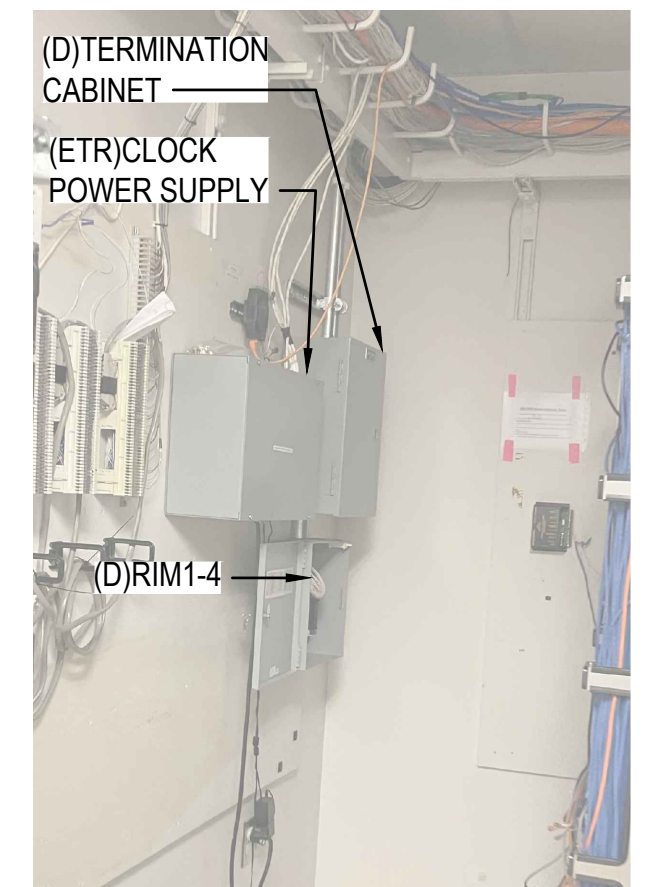
- EXISTING CONDITIONS SHOWN ON THESE DRAWING ARE BASED ON RECORD DRAWINGS AND A NON-DESTRUCTIVE SITE INVESTIGATION OF THE FACILITY. THERE IS NO WARRANTY OR GUARANTEE AS TO THE ACCURACY OF THE INFORMATION SHOWN HEREIN. THE CONTRACTOR SHALL FIELD VERIFY EXISTING CONDITIONS AND ALL ITEMS SCHEDULED FOR DEMOLITION PRIOR TO THE START OF WORK.
- DASHED LINES INDICATE ITEMS TO BE DEMOLISHED. SOLID LINES INDICATE ITEMS THAT ARE EXISTING TO REMAIN.
- UNLESS NOTED OTHERWISE DEMOLISH ALL INTRUSION DETECTION SYSTEM DEVICES AND WIRING. RACEWAY SHALL REMAIN FOR REUSE WHERE FEASIBLE.
- THE RIM'S, DACT, ACU, AND ALL INTERNAL CIRCUIT BOARD COMPONENTS SHALL BE SALVAGED UPON DEMOLITION AND TURNED OVER TO THE ANCHORAGE SCHOOL DISTRICT PROJECT MANAGER. THE OWNER SHALL HAVE FIRST RIGHT OF REFUSAL ON ALL OTHER SALVAGEABLE MATERIALS NOT LISTED ABOVE. THE CONTRACTOR SHALL DISPOSE OF ALL UNWANTED MATERIALS OFF-SITE.

SHEET NOTES:

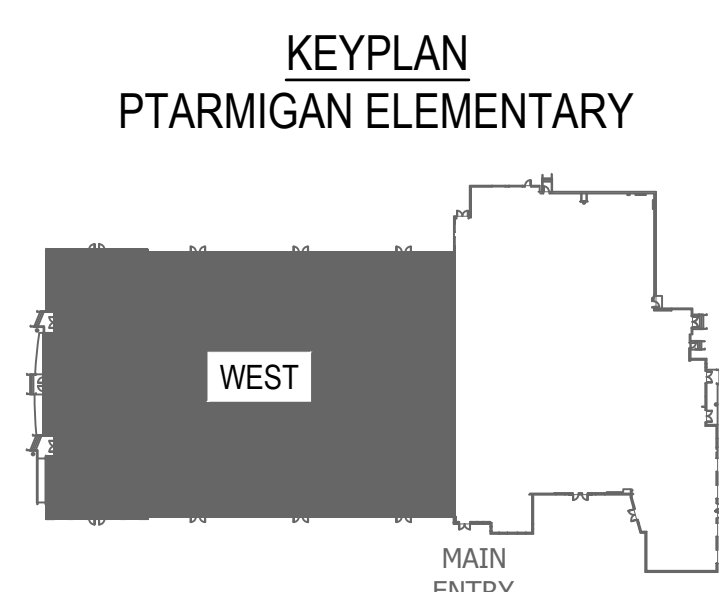
- CAREFULLY REMOVE AND RETAIN RELAY INTERFACE MODULE CABINET (RIM-5) AND TERMINATION CABINET FOR TURN OVER TO THE OWNER. REFER TO DETAIL D3 ON THIS SHEET FOR EXISTING EQUIPMENT LAYOUT. DEMOLISH ALL ASSOCIATED WIRING BACK TO SOURCE. DEMOLISH RACEWAY WITHIN ROOM 183D. ALL OTHER RACEWAY MAY REMAIN FOR REUSE.
- TWO DOOR CONTACTS EXIST FOR EACH DOOR. ONE IS FOR THE INTRUSION DETECTION SYSTEM AND ONE IS FOR THE ACCESS CONTROL SYSTEM. NO WORK IS REQUIRED FOR THE ACCESS CONTROL SYSTEM. RETAIN INTRUSION DETECTION SYSTEM DOOR CONTACTS FOR REUSE. INTERCEPT WIRING IN NEAREST ACCESSIBLE CEILING LOCATION FOR THE INSTALLATION OF A NEW SINGLE POINT ZONE MODULE AND CONNECTION TO THE BSLC BUS. DEMOLISH ALL OTHER WIRING FROM SINGLE POINT ZONE MODULE INSTALL LOCATION BACK TO SOURCE.
- CAREFULLY REMOVE AND RETAIN RELAY INTERFACE MODULE CABINET (RIM-4) AND TERMINATION CABINET FOR TURN OVER TO THE OWNER. DEMOLISH ALL ASSOCIATED WIRING BACK TO SOURCE. EXISTING RACEWAY MAY REMAIN FOR REUSE. REFER TO DETAIL A4 ON THIS SHEET FOR EXISTING EQUIPMENT LAYOUT.
- RETAIN DOOR CONTACTS FOR REUSE. INTERCEPT WIRING IN NEAREST ACCESSIBLE CEILING LOCATION FOR THE INSTALLATION OF A NEW SINGLE POINT ZONE MODULE AND CONNECTION TO THE BSLC BUS. DEMOLISH ALL OTHER WIRING FROM SINGLE POINT ZONE MODULE INSTALL LOCATION BACK TO SOURCE.
- DEMOLISH DOOR CONTACT ON INTERIOR DOOR OF MECHANICAL FAN ROOM 201.



D3 EXISTING SECURITY EQUIPMENT - RM183D
E101 SCALE: NTS

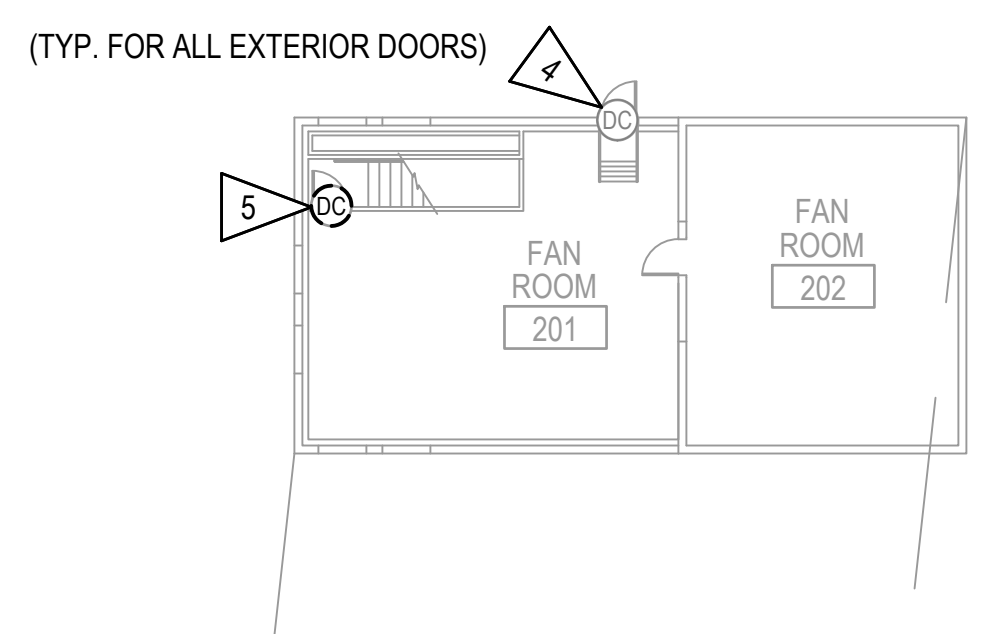


A4 EXISTING SECURITY EQUIPMENT - RM145
E101 SCALE: NTS

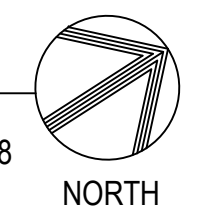


NOTIFICATION OF CHILD OCCUPIED FACILITY:
PORTIONS OF THIS BUILDING ARE CLASSIFIED AS A CHILD OCCUPIED FACILITY IN ACCORDANCE WITH 40 CFR 745 AND LEAD-BASED PAINT HAS BEEN IDENTIFIED ON COMPONENTS TO BE DISTURBED IN THOSE AREAS. PERSONNEL PERFORMING WORK IN THESE AREAS MUST COMPLY WITH THE REQUIREMENTS OF 40 CFR 745, INCLUDING TRAINING, WORK PRACTICES AND CLEANING OF THE SPECIFIC INFORMATION CONCERNING DISTURBING, REMOVING, AND DISPOSING OF LEAD MATERIALS AND THE INSTALLATION OF NEW MATERIALS OR COMPONENTS. THIS NOTIFICATION IS PROVIDED IN ACCORDANCE WITH EPA AND OSHA REQUIREMENTS.

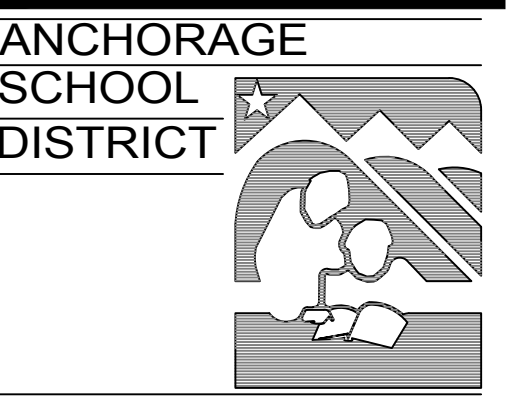
NOTIFICATION OF POTENTIAL HAZARDS:
ASBESTOS, LEAD, AND OTHER HAZARDOUS MATERIALS ARE PRESENT IN THE BUILDING THAT MAY IMPACT THE WORK OF ALL TRADES. REGULATED AIR CONTAMINANTS, INCLUDING ASBESTOS AND LEAD, ARE ALSO PRESENT IN SETTLED AND CONCEALED DUST IN AND ON ARCHITECTURAL, STRUCTURAL, MECHANICAL, AND ELECTRICAL COMPONENTS OR SYSTEMS THROUGHOUT THE BUILDING. ALL TRADES SHALL COORDINATE WITH OTHER TRADES AND CONDUCT THEIR WORK TO PREVENT WORKER EXPOSURE OR SITE CONTAMINATION. REFER TO THE REQUIREMENTS OF THE RFQ FOR SPECIFIC INFORMATION CONCERNING DISTURBING, REMOVING, AND DISPOSING OF THESE MATERIALS AND THE INSTALLATION OF NEW MATERIALS OR COMPONENTS. THIS NOTIFICATION IS PROVIDED IN ACCORDANCE WITH EPA AND OSHA REQUIREMENTS.



A1 INTRUSION DETECTION DEMOLITION PLAN - WEST
E101 SCALE: 1/16" = 1'-0"



P:\ANC23\JOBS\232597 ASD INTRUSION DET-PTARM AND BEG\CH010.DWG\SE101 INTRUSION DETECTION DEMOLITION PLAN - WEST.DWG E101 INTRUSION DETECTION DEMOLITION PLAN - WEST - STEER, ANDREW - LAST SAVED: February 20, 2024 - PLOT DATE: 2/20/24



ASD PTARMIGAN ELEMENTARY SCHOOL INTRUSION DETECTION SYSTEM REPLACEMENT

INVITATION TO BID

REV	DATE	DESCRIPTION

PROJ. NO.	232597
DRAWN	JHZ
CHECKED	LRH
DATE	02/20/24

© COFFMAN ENGINEERS INC.

SHEET TITLE:

INTRUSION DETECTION DEMOLITION PLAN - EAST

SHEET NO:

E102

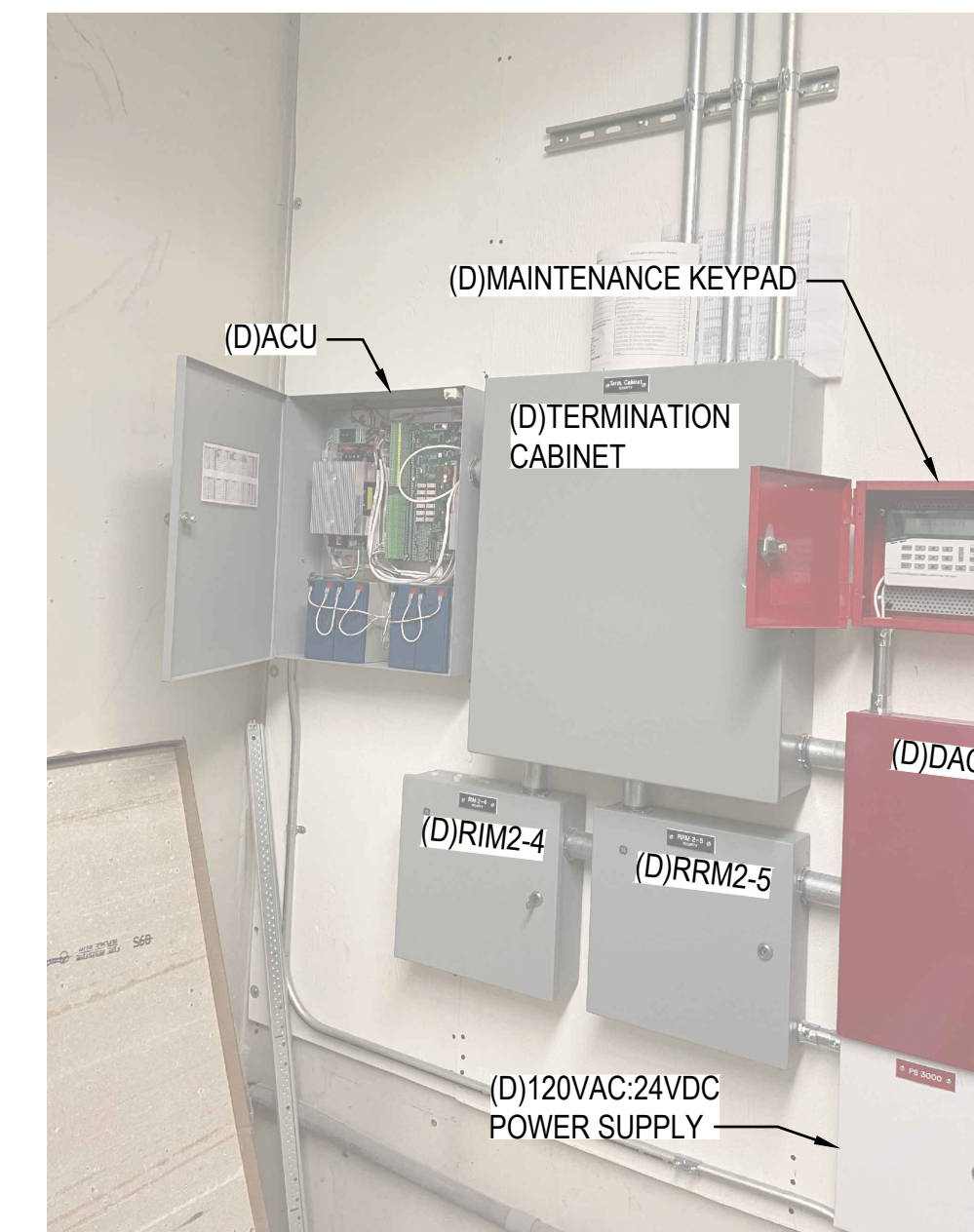
SPACE RESERVED FOR MOA PERMIT STAMP

GENERAL NOTES:

- REFER TO SHEET E101 FOR GENERAL NOTES.

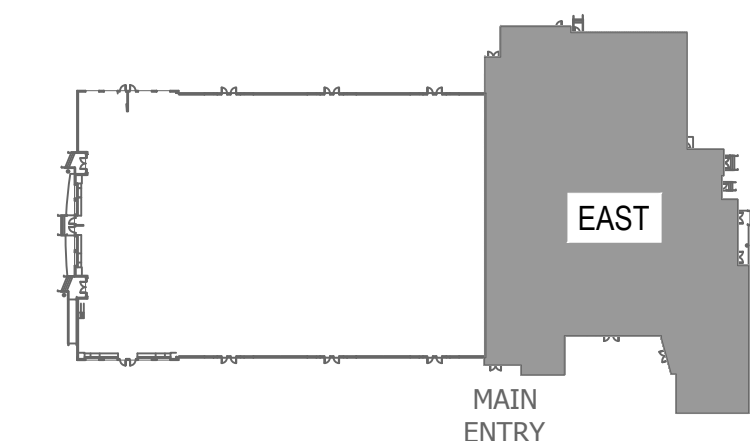
SHEET NOTES:

- TWO DOOR CONTACTS EXIST FOR EACH DOOR. ONE IS FOR THE INTRUSION DETECTION SYSTEM AND ONE IS FOR THE ACCESS CONTROL SYSTEM. RETAIN INTRUSION DETECTION SYSTEM DOOR CONTACTS FOR REUSE. INTERCEPT WIRING IN NEAREST ACCESSIBLE CEILING LOCATION FOR THE INSTALLATION OF A NEW SINGLE POINT ZONE MODULE AND CONNECTION TO THE BSCL BUS. DEMOLISH ALL OTHER WIRING FROM SINGLE POINT ZONE MODULE INSTALL LOCATION BACK TO SOURCE.
- CAREFULLY REMOVE AND RETAIN RELAY INTERFACE MODULE CABINET (RIM2-4), REMOTE RELAY MODULE (RRM2-5), DACT, ACU, TERMINATION CABINET, MAINTENANCE KEYPAD, AND POWER SUPPLIES FOR TURN OVER TO THE OWNER. DEMOLISH ALL ASSOCIATED WIRING BACK TO SOURCE. EXISTING RACEWAY MAY REMAIN FOR REUSE. REFER TO DETAIL A4 ON THIS SHEET FOR EXISTING EQUIPMENT LAYOUT.
- BOTH BOILERS ARE CONNECTED TO A SINGLE BOILER FAIL RELAY. THE RELAY REPORTS BOILER FAIL STATUS AS A SINGLE POINT INTO THE EXISTING INTRUSION DETECTION SYSTEM. REFER TO SHEET E202 FOR ADDITIONAL INFORMATION.
- GENERATOR RUN AND TROUBLE REPORT VIA THE AUTOMATIC TRANSFER SWITCH. RETAIN CONNECTION POINTS FOR RECONNECTION TO THE NEW INTRUSION DETECTION SYSTEM.
- COMMON FUEL OIL ALARM IS CONNECTED TO EXISTING INTRUSION DETECTION SYSTEM. EXACT LOCATION OF SENSOR IS UNKNOWN. CONTRACTOR SHALL FIELD VERIFY LOCATION AND DETERMINE ROUTING FOR RECONNECTION OF SENSOR TO NEW INTRUSION DETECTION SYSTEM.
- RETAIN BUILDING FREEZE SENSOR FOR RECONNECTION TO NEW INTRUSION DETECTION SYSTEM.
- RETAIN PHASE LOSS RELAY FOR RECONNECTION TO NEW INTRUSION DETECTION SYSTEM.
- RETAIN DOOR CONTACTS FOR REUSE. INTERCEPT WIRING IN NEAREST ACCESSIBLE CEILING LOCATION FOR THE INSTALLATION OF A NEW SINGLE POINT ZONE MODULE AND CONNECTION TO THE BSCL BUS. DEMOLISH ALL OTHER WIRING FROM SINGLE POINT ZONE MODULE INSTALL LOCATION BACK TO SOURCE.



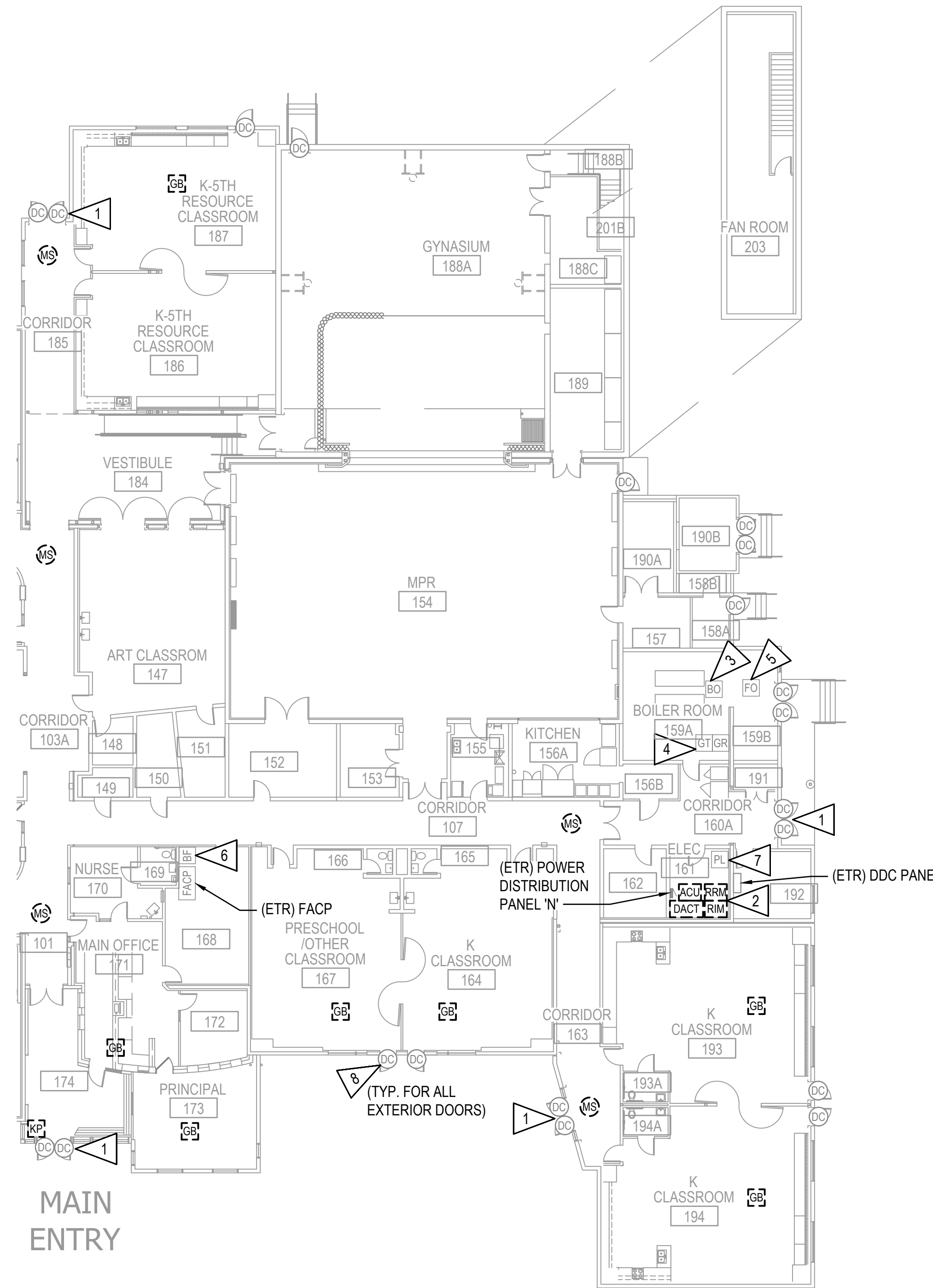
A4 EXISTING SECURITY EQUIPMENT LAYOUT
SCALE: NTS

KEYPLAN PTARMIGAN ELEMENTARY

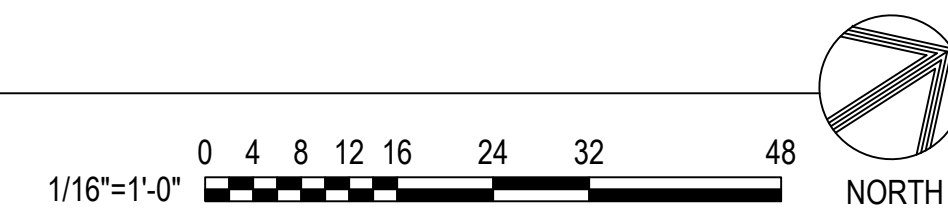


NOTIFICATION OF CHILD OCCUPIED FACILITY:
PORTIONS OF THIS BUILDING ARE CLASSIFIED AS A CHILD OCCUPIED FACILITY IN ACCORDANCE WITH 40 CFR 745 AND LEAD-BASED PAINT HAS BEEN IDENTIFIED ON COMPONENTS TO BE DISTURBED IN THOSE AREAS. PERSONNEL PERFORMING WORK IN THESE AREAS MUST COMPLY WITH THE REQUIREMENTS OF 40 CFR 745, INCLUDING TRAINING, WORK PRACTICES AND CLEANING OF THE SPECIFIC INFORMATION CONCERNING DISTURBING, REMOVING, AND DISPOSING OF LEAD MATERIALS AND THE INSTALLATION OF NEW MATERIALS OR COMPONENTS. THIS NOTIFICATION IS PROVIDED IN ACCORDANCE WITH EPA AND OSHA REQUIREMENTS.

NOTIFICATION OF POTENTIAL HAZARDS:
ASBESTOS, LEAD, AND OTHER HAZARDOUS MATERIALS ARE PRESENT IN THE BUILDING THAT MAY IMPACT THE WORK OF ALL TRADES. REGULATED AIR CONTAMINANTS, INCLUDING ASBESTOS AND LEAD, ARE ALSO PRESENT IN SETTLED AND CONCEALED DUST IN AND ON ARCHITECTURAL, STRUCTURAL, MECHANICAL, AND ELECTRICAL COMPONENTS OR SYSTEMS THROUGHOUT THE BUILDING. ALL TRADES SHALL COORDINATE WITH OTHER TRADES AND CONDUCT THEIR WORK TO PREVENT WORKER EXPOSURE OR SITE CONTAMINATION. REFER TO THE REQUIREMENTS OF THE RFQ FOR SPECIFIC INFORMATION CONCERNING DISTURBING, REMOVING, AND DISPOSING OF THESE MATERIALS AND THE INSTALLATION OF NEW MATERIALS OR COMPONENTS. THIS NOTIFICATION IS PROVIDED IN ACCORDANCE WITH EPA AND OSHA REQUIREMENTS.



A1 INTRUSION DETECTION DEMOLITION PLAN - EAST
SCALE: 1/16" = 1'-0"



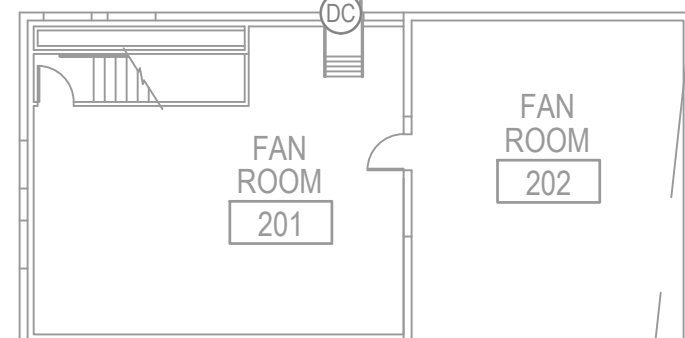
P:\ANC23\JOBS\232597 ASD INTRUSION DET-PTARMIGAN AND BEG\CH010 DWG\SE102 INTRUSION DETECTION DEMOLITION PLAN - EAST - STEER, ANDREW - LAST SAVED: February 20, 2024 - PLOT DATE: 2/20/24

P:\ANC23\JOBS\232597 ASD INTRUSION DET-PTARMIGAN DWG\010 DWG\SEPTARMIGAN DWG\E201 INTRUSION DETECTION PLAN - WEST STEER ANDREW LAST SAVED: February 20, 2024 - PLOT DATE: 2/20/24

NOTIFICATION OF CHILD OCCUPIED FACILITY:
 PORTIONS OF THIS BUILDING ARE CLASSIFIED AS A CHILD OCCUPIED FACILITY IN ACCORDANCE WITH 40 CFR 745 AND LEAD-BASED PAINT HAS BEEN IDENTIFIED ON COMPONENTS TO BE DISTURBED IN THOSE AREAS. PERSONNEL PERFORMING WORK IN THESE AREAS MUST COMPLY WITH THE REQUIREMENTS OF 40 CFR 745, INCLUDING TRAINING, WORK PRACTICES AND CLEANING OF THE SPECIFIC INFORMATION CONCERNING DISTURBING, REMOVING, AND DISPOSING OF LEAD MATERIALS AND THE INSTALLATION OF NEW MATERIALS OR COMPONENTS. THIS NOTIFICATION IS PROVIDED IN ACCORDANCE WITH EPA AND OSHA REQUIREMENTS.

NOTIFICATION OF POTENTIAL HAZARDS:
 ASBESTOS, LEAD, AND OTHER HAZARDOUS MATERIALS ARE PRESENT IN THE BUILDING THAT MAY IMPACT THE WORK OF ALL TRADES. REGULATED AIR CONTAMINANTS, INCLUDING ASBESTOS AND LEAD, ARE ALSO PRESENT IN SETTLED AND CONCEALED DUST IN AND ON ARCHITECTURAL, STRUCTURAL, MECHANICAL, AND ELECTRICAL COMPONENTS OR SYSTEMS THROUGHOUT THE BUILDING. ALL TRADES SHALL COORDINATE WITH OTHER TRADES AND CONDUCT THEIR WORK TO PREVENT WORKER EXPOSURE OR SITE CONTAMINATION. REFER TO THE REQUIREMENTS OF THE RFQ FOR SPECIFIC INFORMATION CONCERNING DISTURBING, REMOVING, AND DISPOSING OF THESE MATERIALS AND THE INSTALLATION OF NEW MATERIALS OR COMPONENTS. THIS NOTIFICATION IS PROVIDED IN ACCORDANCE WITH EPA AND OSHA REQUIREMENTS.

(TYP. FOR ALL EXTERIOR DOORS)



(TYP. FOR ALL EXTERIOR DOORS)

SPACE RESERVED FOR MOA PERMIT STAMP

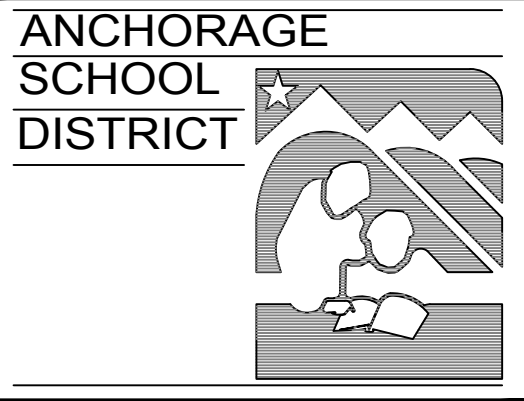
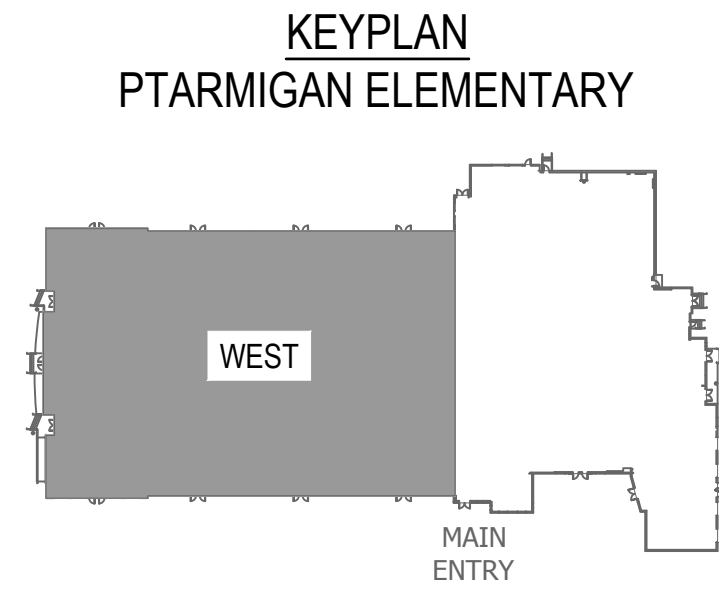
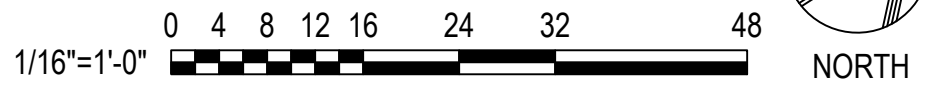
GENERAL NOTES:

1. FIELD COORDINATE THE LOCATION OF ALL NEW EQUIPMENT AND DEVICES.
2. INSTALL ALL NEW DEVICES IN THE SAME LOCATIONS AS PREVIOUSLY DEMOLISHED DEVICES UNLESS NOTED OTHERWISE.
3. REFER TO SHEET E401 FOR THE INTRUSION DETECTION SYSTEM RISER.
4. ALL DEVICES AND WIRING SHALL BE NEW UNLESS NOTED OTHERWISE. EXISTING RACEWAY THAT CONTAINED SECURITY WIRING MAY BE REUSED. COMPLETED INSTALLATION SHALL COMPLY WITH NEC.
5. ALL NEW AND EXISTING TO REMAIN DEVICES SHALL BE CONNECTED TO THE NEW INTRUSION DETECTION SYSTEM AS DISCRETE POINTS AND SHALL NOT BE DAISY CHAINED TOGETHER WITH THE EXCEPTION OF DOOR CONTACTS INSTALLED ON DOUBLE DOORS.
6. ALL NEW NON-ADDRESSABLE SECURITY DEVICES SHALL EACH BE CONNECTED TO AN ADDRESSABLE SINGLE POINT ZONE MODULE TO OBTAIN A FULLY ADDRESSABLE SECURITY SYSTEM. THE NEW DEVICES SHALL BE REPLACED IN THE SAME LOCATION AS THE EXISTING DEVICES AND THE SINGLE POINT ZONE MODULES SHALL BE LOCATED AS CLOSE AS POSSIBLE TO THE DEVICE. WHERE DEVICES ARE INSTALLED IN AREAS WITHOUT SUSPENDED ACT GRID OR EXPOSED STRUCTURE THE SINGLE POINT ZONE MODULE SHALL BE INSTALLED IN THE NEAREST ACCESSIBLE CEILING SPACE. THE SHOP DRAWINGS SHALL CLEARLY IDENTIFY ALL SINGLE POINT ZONE MODULE LOCATIONS.
7. RECONNECT EXISTING GENERATOR RUN, GENERATOR TROUBLE, COMMON FUEL OIL ALARM, BOILER FAIL, PHASE LOSS, AND BUILDING FREEZE SENSORS/RELAYS TO THE NEW INTRUSION DETECTION SYSTEM.

SHEET NOTES:

1. INSTALL NEW SINGLE POINT ZONE MODULE IN NEAREST ACCESSIBLE CEILING AND RECONNECT DOOR CONTACT TO MODULE. DOUBLE DOOR CONTACTS SHALL BE DAISY CHAINED TOGETHER AND CONNECTED TO (1) SINGLE POINT ZONE MODULE. CONNECT SINGLE POINT ZONE MODULE TO THE BSIC BUS USING NEW WIRING. TEST SENSOR FOR FUNCTIONALITY BEFORE RECONNECTION.

A1 INTRUSION DETECTION PLAN - WEST
 E201 SCALE: 1/16" = 1'-0"



ASD PTARMIGAN ELEMENTARY SCHOOL INTRUSION DETECTION SYSTEM REPLACEMENT

INVITATION TO BID

REV	DATE	DESCRIPTION

PROJ. NO.	232597
DRAWN	JHZ
CHECKED	LRH
DATE	02/20/24

© COFFMAN ENGINEERS INC.

INTRUSION DETECTION PLAN - WEST

SHEET NO:
E201

NOTIFICATION OF CHILD OCCUPIED FACILITY:
 PORTIONS OF THIS BUILDING ARE CLASSIFIED AS A CHILD OCCUPIED FACILITY IN ACCORDANCE WITH 40 CFR 745 AND LEAD-BASED PAINT HAS BEEN IDENTIFIED ON COMPONENTS TO BE DISTURBED IN THOSE AREAS. PERSONNEL PERFORMING WORK IN THESE AREAS MUST COMPLY WITH THE REQUIREMENTS OF 40 CFR 745, INCLUDING TRAINING, WORK PRACTICES AND CLEANING OF THE SPECIFIC INFORMATION CONCERNING DISTURBING, REMOVING, AND DISPOSING OF LEAD MATERIALS AND THE INSTALLATION OF NEW MATERIALS OR COMPONENTS. THIS NOTIFICATION IS PROVIDED IN ACCORDANCE WITH EPA AND OSHA REQUIREMENTS.

NOTIFICATION OF POTENTIAL HAZARDS:
 ASBESTOS, LEAD, AND OTHER HAZARDOUS MATERIALS ARE PRESENT IN THE BUILDING THAT MAY IMPACT THE WORK OF ALL TRADES. REGULATED AIR CONTAMINANTS, INCLUDING ASBESTOS AND LEAD, ARE ALSO PRESENT IN SETTLED AND CONCEALED DUST IN AND ON ARCHITECTURAL, STRUCTURAL, MECHANICAL, AND ELECTRICAL COMPONENTS OR SYSTEMS THROUGHOUT THE BUILDING. ALL TRADES SHALL COORDINATE WITH OTHER TRADES AND CONDUCT THEIR WORK TO PREVENT WORKER EXPOSURE OR SITE CONTAMINATION. REFER TO THE REQUIREMENTS OF THE RFQ FOR SPECIFIC INFORMATION CONCERNING DISTURBING, REMOVING, AND DISPOSING OF THESE MATERIALS AND THE INSTALLATION OF NEW MATERIALS OR COMPONENTS. THIS NOTIFICATION IS PROVIDED IN ACCORDANCE WITH EPA AND OSHA REQUIREMENTS.

SPACE RESERVED FOR MOA PERMIT STAMP

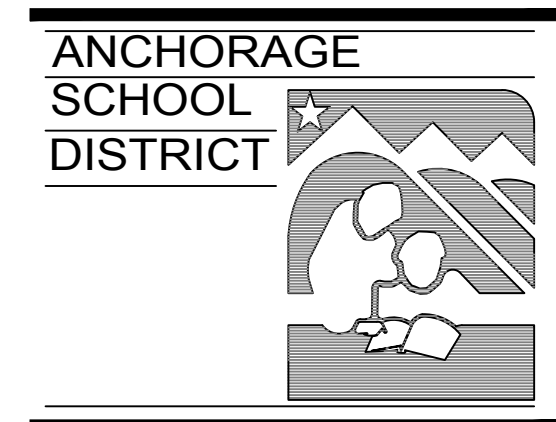
COFFMAN ENGINEERS
 800 F Street
 Anchorage, AK 99501
 ph 907.276.6664
 www.coffman.com AECC249

GENERAL NOTES:

- REFER TO SHEET E201 FOR GENERAL NOTES.

SHEET NOTES:

- INSTALL THE NEW SECURITY CONTROL PANEL, MAINTENANCE KEYPAD, AND FIRE KEYPAD. REFER TO INTRUSION DETECTION RISER ON SHEET E401 FOR ADDITIONAL INFORMATION. REFER TO EXISTING POINTS SCHEDULES ON SHEET E301.
- BOTH BOILERS REPORT BOILER FAIL STATUS ON A SINGLE RELAY. INSTALL (1) SINGLE POINT ZONE MODULE FOR EACH BOILER AND CONNECT THEM BOTH TO THE BSLC BUS. CONNECT THE EXISTING BOILER FAIL RELAY TO BOTH SINGLE POINT ZONE MODULES. REFER TO INTRUSION DETECTION SYSTEM RISER ON SHEET E401 FOR ADDITIONAL INFORMATION.
- INSTALL NEW KEYPAD FOR ARMING/DISARMING THE BUILDING AT EXISTING LOCATION. PROVIDE KEYPAD WITH THUMB LOCK POLYCARBONATE COVER.
- RECONNECT EXISTING BUILDING FREEZE SENSOR TO NEW INTRUSION DETECTION SYSTEM. TEST SENSOR FOR FUNCTIONALITY BEFORE RECONNECTION.
- RECONNECT EXISTING PHASE LOSS RELAY TO NEW INTRUSION DETECTION SYSTEM. TEST RELAY FOR FUNCTIONALITY BEFORE RECONNECTION.
- RECONNECT EXISTING GENERATOR RUN AND TROUBLE OUTPUTS TO NEW INTRUSION DETECTION SYSTEM. TEST OUTPUTS FOR FUNCTIONALITY BEFORE RECONNECTION.
- RECONNECT EXISTING COMMON FUEL OIL ALARM TO NEW INTRUSION DETECTION SYSTEM. TEST OUTPUT FOR FUNCTIONALITY BEFORE RECONNECTION.
- INSTALL NEW KEYPAD FOR ARMING/DISARMING THE BUILDING AT THE NEW LOCATION.
- INSTALL NEW SINGLE POINT ZONE MODULE IN NEAREST ACCESSIBLE CEILING AND RECONNECT DOOR CONTACT TO MODULE. DOUBLE DOOR CONTACTS SHALL BE DAISY CHAINED TOGETHER AND CONNECTED TO (1) SINGLE POINT ZONE MODULE. CONNECT SINGLE POINT ZONE MODULE TO THE BSLC BUS USING NEW WIRING. TEST SENSOR FOR FUNCTIONALITY BEFORE RECONNECTION.



ASD PTARMIGAN ELEMENTARY SCHOOL INTRUSION DETECTION SYSTEM REPLACEMENT

INVITATION TO BID

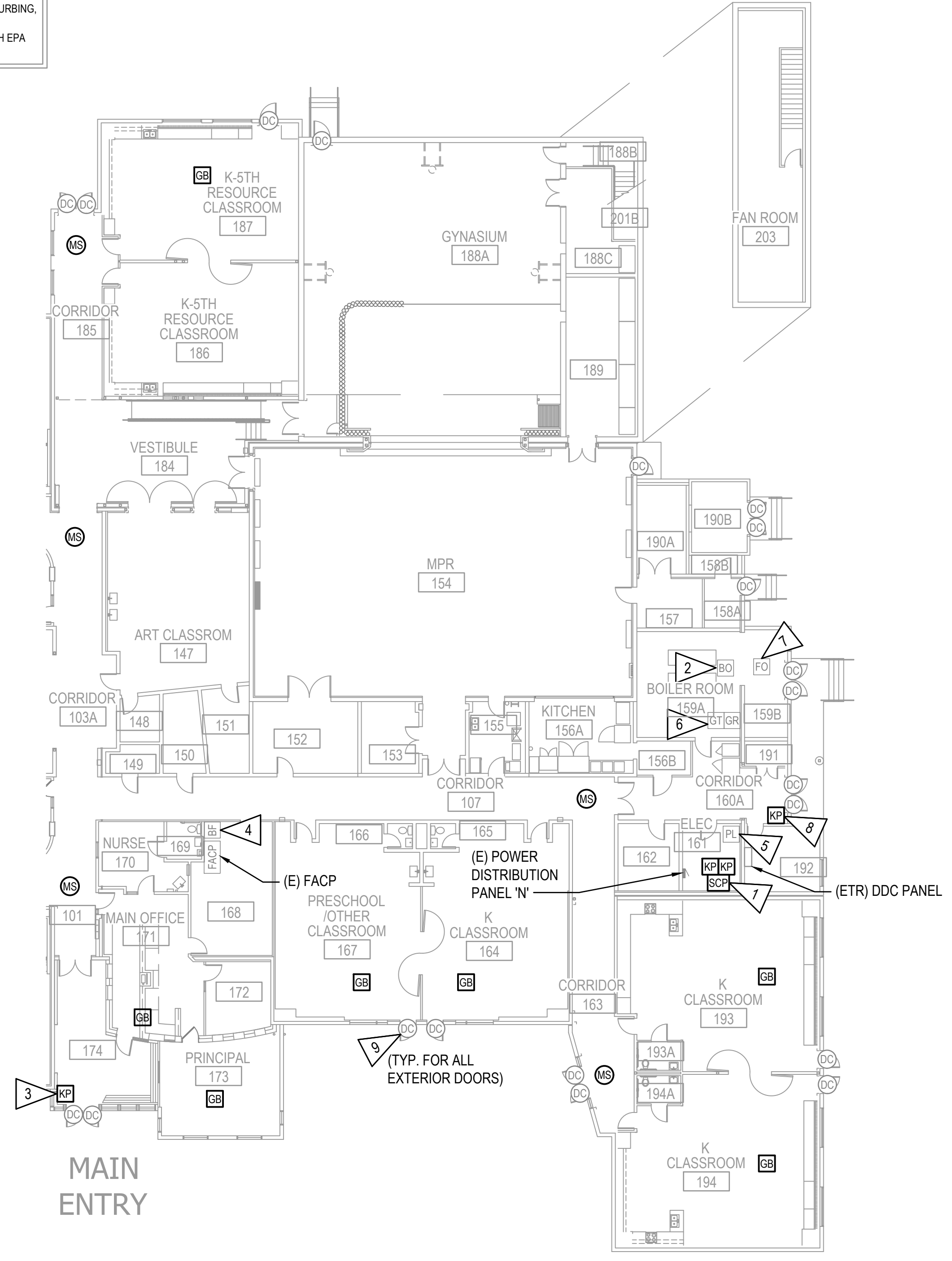
REV	DATE	DESCRIPTION

PROJ. NO.	232597
DRAWN	JHZ
CHECKED	LRH
DATE	02/20/24

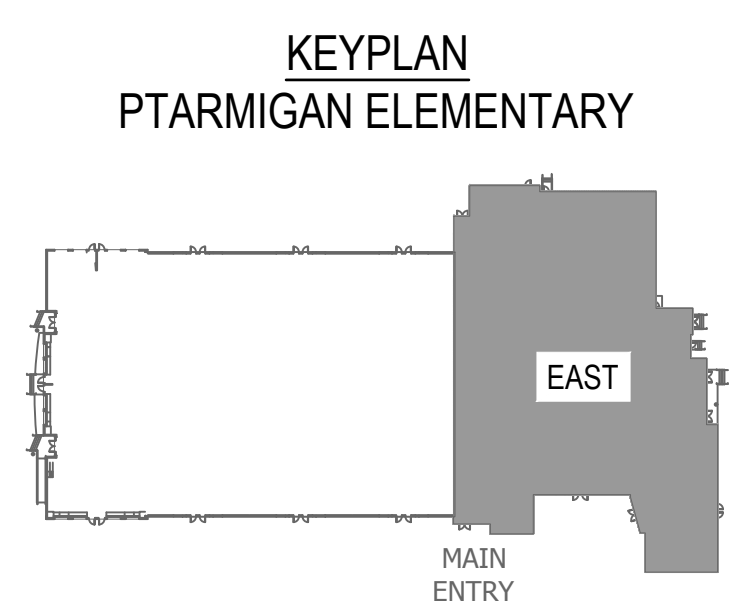
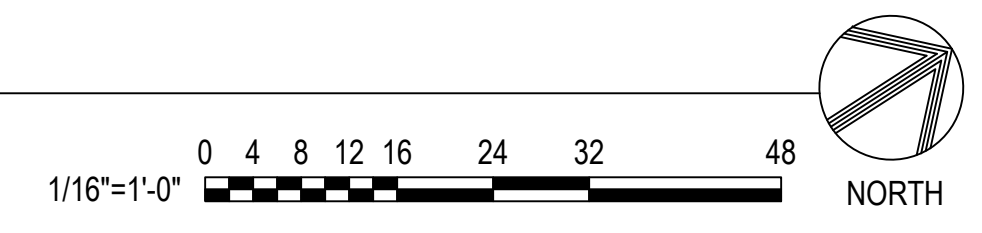
© COFFMAN ENGINEERS INC.

INTRUSION DETECTION PLAN - EAST

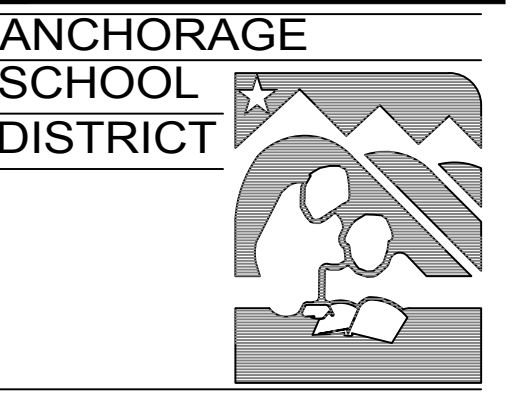
SHEET NO:
E202



A1 INTRUSION DETECTION PLAN - EAST
 E202 SCALE: 1/16" = 1'-0"



P:\ANC23\JOBS\232597 ASD INTRUSION DET-PTARMIGAN AND BEGICH10 DWG\SEPTARMIGAN DWG\2024 INTRUSION DETECTION PLAN - EAST - STEER, ANDREW - LAST SAVED: February 20, 2024 - PLOT DATE: 2/20/24



ASD PTARMIGAN ELEMENTARY SCHOOL INTRUSION DETECTION SYSTEM REPLACEMENT

INVITATION TO BID

REV	DATE	DESCRIPTION

PROJ. NO.	232597
DRAWN	JHZ
CHECKED	LRH
DATE	02/20/24

© COFFMAN ENGINEERS INC.

SHEET TITLE:

INTRUSION DETECTION SYSTEM TYPICAL RISER DIAGRAM

SHEET NO:

E401

SECURITY SYSTEM CABLE SCHEDULE

CABLE NUMBER	DESCRIPTION	SPECIFICATION
1	MULTI-DROP RS-485 COMMUNICATIONS CABLE	SECTION 283100
2	MULTI-DROP RS-485 COMMUNICATIONS CABLE - 1 PAIR	SECTION 283100
3	KEYPAD/COMMUNICATION CABLE	SECTION 283100
4	INTERCONNECT CABLE	SECTION 283100

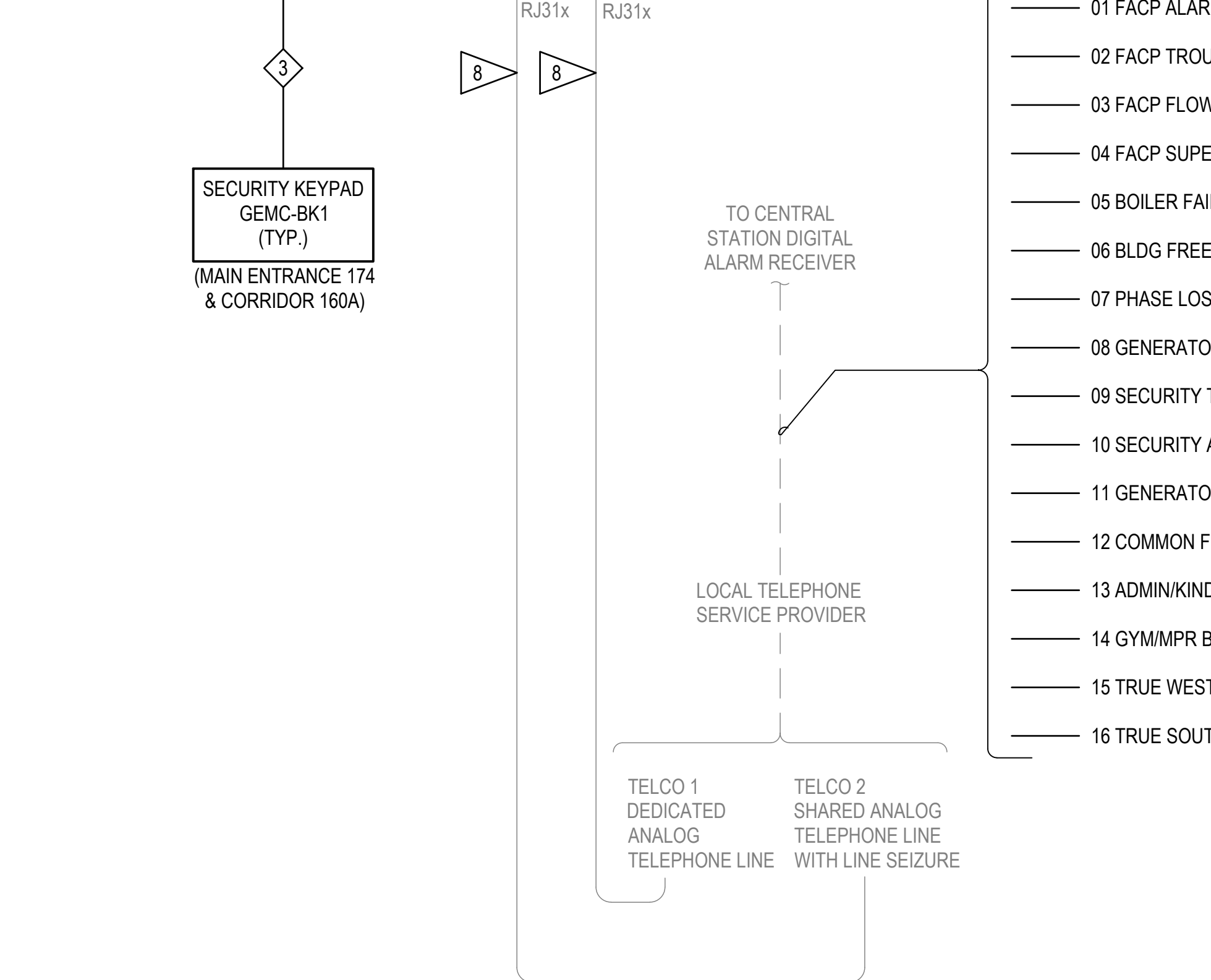
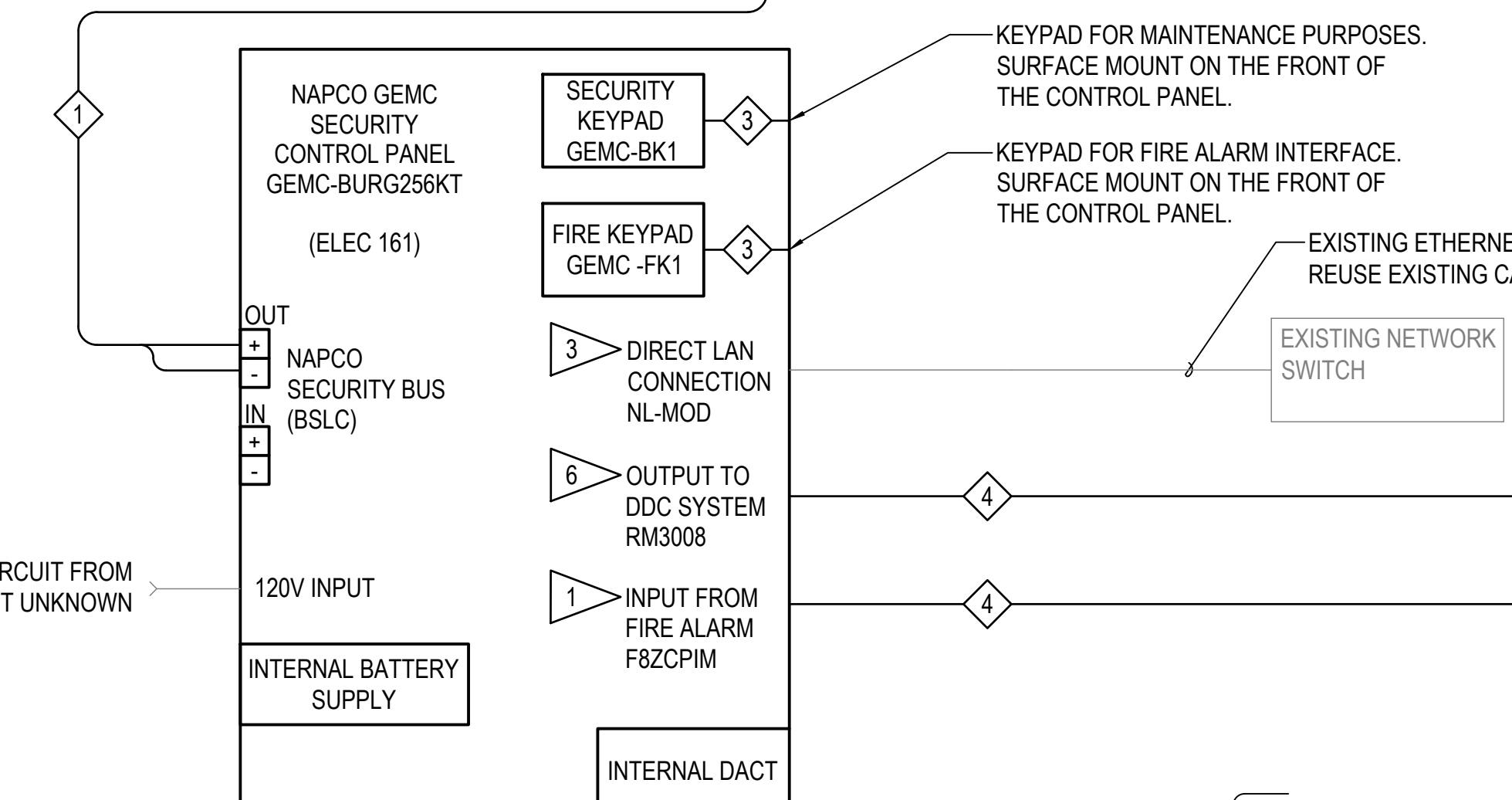
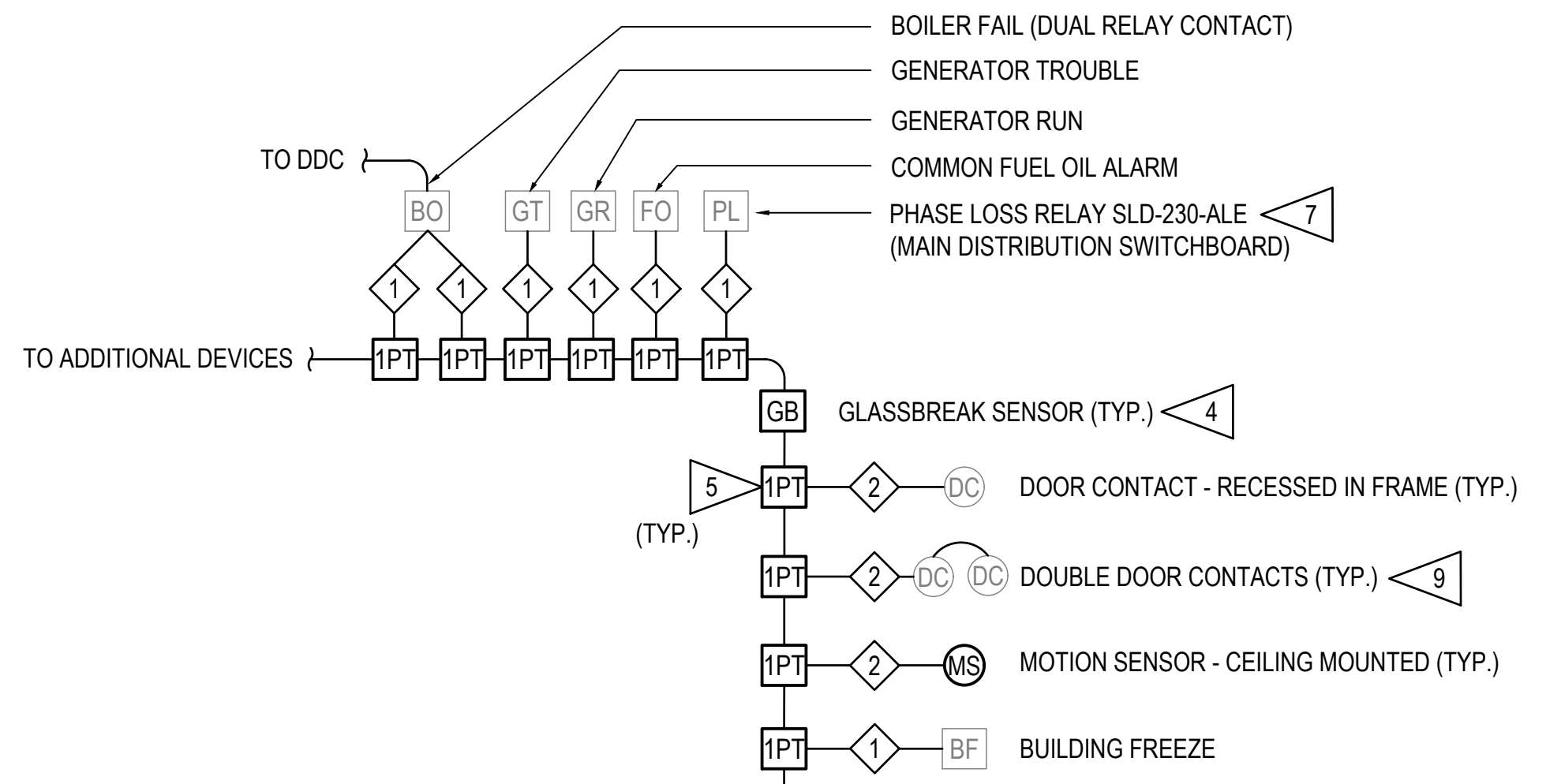
GENERAL NOTES:

- REFER TO PLANS FOR QUANTITIES AND LOCATIONS OF ALL SECURITY SYSTEM DEVICES.
- CONTRACTOR SHALL LABEL EACH DEVICE IN THE FIELD AND ON THE BK1 KEYPADS PER DETAIL A4 BELOW.

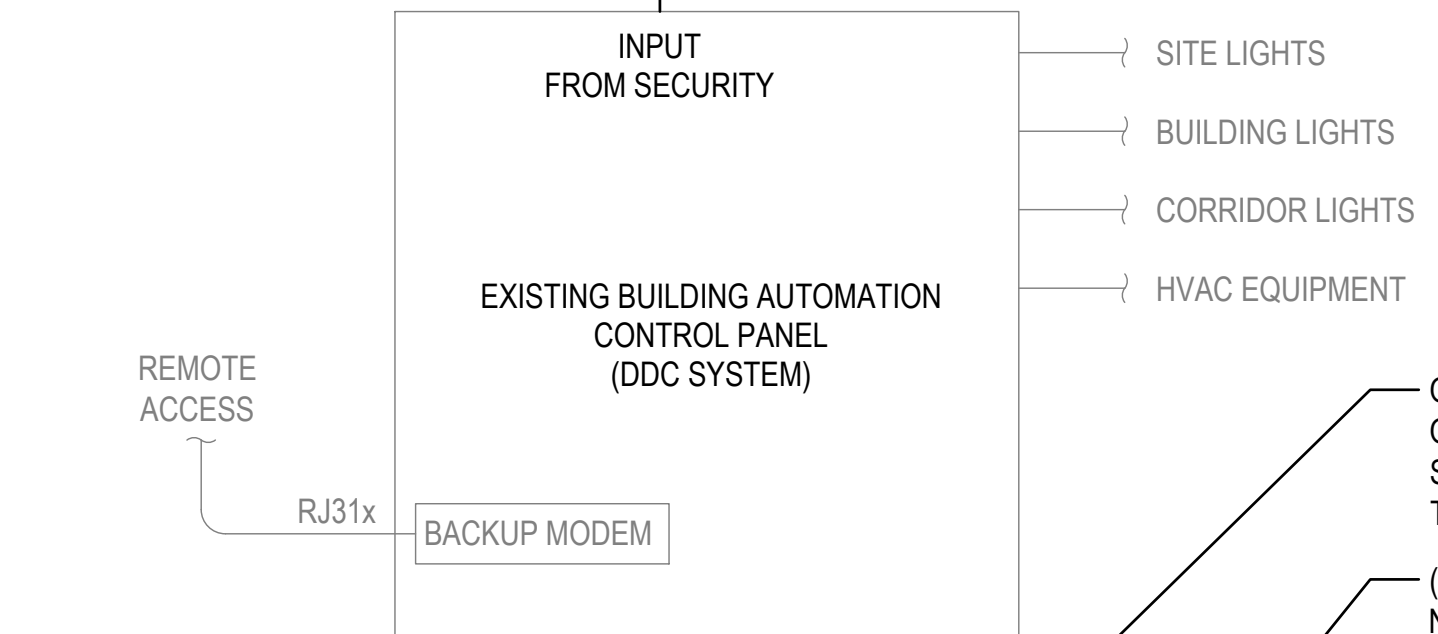
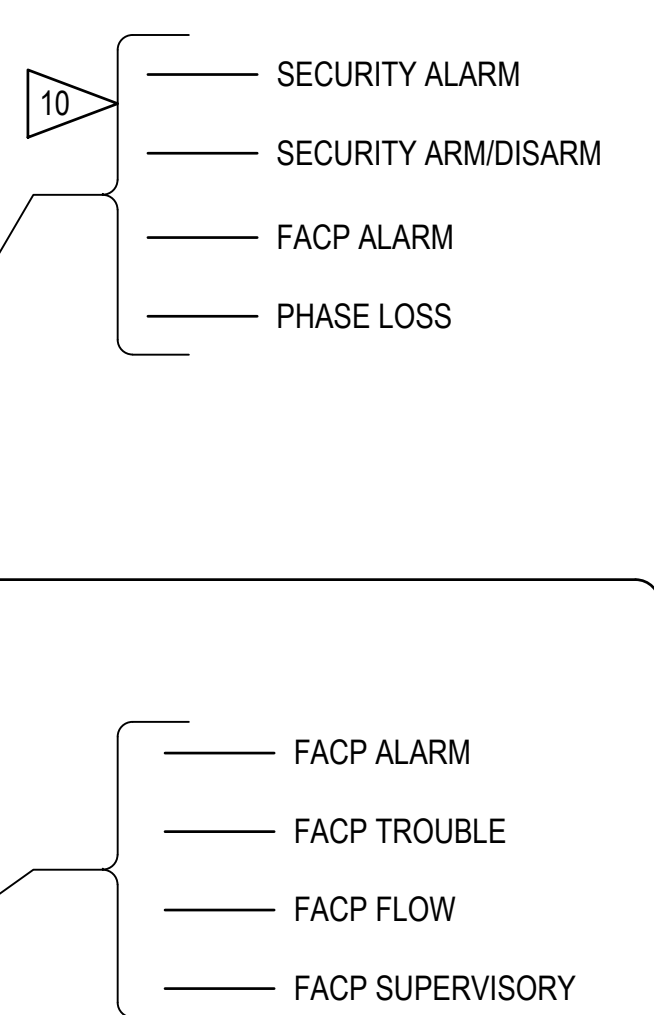
SHEET NOTES:

- PROVIDE FIRE ALARM INPUT MODULE F8ZCPIM. RECONNECT FIRE ALARM CONTROL PANEL TO NEW SECURITY CONTROL PANEL.
- REUSE EXISTING CIRCUIT AND CONNECT TO NEW SECURITY CONTROL PANEL. REFER TO E202 FOR PANEL LOCATION.
- REUSE EXISTING CAT6 CABLE. PROVIDE NEW NETWORK MODULE IN THE SECURITY CONTROL PANEL. CONTRACTOR SHALL VERIFY OPERATION OF GEMC-NL-MOD UPON INSTALLATION.
- EACH ADDRESSABLE DEVICE SHALL BE CONNECTED DIRECTLY TO THE BSLC BUS.
- EACH NON-ADDRESSABLE DEVICE SHALL BE CONNECTED TO A SINGLE POINT ZONE MODULE WHICH SHALL THEN BE CONNECTED TO THE BSLC BUS.
- PROVIDE RELAY OUTPUT MODULE RM3008 FOR OUTPUTS TO THE DDC. RECONNECT DDC PANEL TO NEW SECURITY CONTROL PANEL.
- CONNECT EXISTING PHASE LOSS MONITOR RELAY TYPE SLD-230-ALE LOCATED IN THE MAIN DISTRIBUTION SWITCHBOARD TO SINGLE POINT ZONE MODULE.
- EXISTING TELEPHONE CONNECTION AT EXTERNAL DACT. EXTEND AS NECESSARY AND CONNECT TO NEW INTEGRAL DACT WITHIN THE SECURITY CONTROL PANEL.
- DOOR CONTACTS INSTALLED ON DOUBLE DOORS SHALL BE DAISY CHAINED TOGETHER.
- CONTRACTOR SHALL VERIFY WHAT SIGNALS REPORT TO THE DCC THROUGH THE SECURITY CONTROL PANEL AND RECONNECT THE SAME SIGNALS TO THE NEW SECURITY CONTROL PANEL.

SPACE RESERVED FOR MOA PERMIT STAMP



- 01 FACP ALARM
- 02 FACP TROUBLE
- 03 FACP FLOW
- 04 FACP SUPERVISORY
- 05 BOILER FAIL
- 06 BLDG FREEZE
- 07 PHASE LOSS
- 08 GENERATOR RUN
- 09 SECURITY TROUBLE
- 10 SECURITY ARM/DISARM
- 11 GENERATOR TROUBLE
- 12 COMMON FUEL ALARM
- 13 ADMIN/KINDERGARTEN BURG
- 14 GYM/MPR BURG
- 15 TRUE WEST CLASSROOMS BURG
- 16 TRUE SOUTH CLASSROOMS BURG



ZONE POINT NUMBER → 102 - CLSRM - 144 - 1 - 1PT - GB

ONLY THIS PORTION OF THE DEVICE NAME SHALL APPEAR ON THE BK1 KEYPADS.

(IF APPLICABLE) NOTE: THIS INDICATES SINGLE POINT MODULE INSTALLED IN FRONT OF CONVENTIONAL DEVICE

FIELD DEVICE TYPE:
'GB' = GLASSBREAK SENSOR
'DC' = DOOR CONTACT
'MS' = MOTION SENSOR

NOTE: FOR MULTIPLE DEVICES IN THE SAME CORRIDOR OR ROOM ADD NUMERICAL INDICATOR (1, 2, 3, 4) TO POINT DESCRIPTION

LOCATION:
'CLSRM' = CLASSROOM
'GYM' = GYMNASIUM
'MN OFC' = MAIN OFFICE
'CORR' = CORRIDOR
'VEST' = VESTIBULE
'MPR' = MULTIPURPOSE ROOM
OTHER LOCATIONS: NAME PER FLOOR PLANS, CONFIRM WITH ASD PRIOR TO PROGRAMMING

A1 INTRUSION DETECTION SYSTEM TYPICAL RISER DIAGRAM

E401 SCALE: NTS

A4 I/O POINT NAMING FORMAT

E401 SCALE: NTS

P:\ANC23\JOBS\232597 ASD INTRUSION DET-PTARMIGAN AND BEGICH10 DWG\SEPTARMIGAN DWG\SE401.DWG STEER, ANDREW - LAST SAVED February 19, 2024 - PLOT DATE: 2/20/24