



Anchorage School District

Educating All Students for Success in Life

Itumalo A'oga a Anchorage

A'oa'oina o Tamaiti A'oga Uma ina ia Manuia ile Olaga

**Ta'iala ile Fa'aaogaina ole
Zangle Parent Connect**

Faasologa o Mataupu

E Faapefea le Fa'aaogaina ole ParentConnection	2
Afio Mai Matua!	2
Mana'oga Tau-Komipiuta	2
Ole Mauaina ole ParentConnection ma le Faato'a Amataina (logging in)	2
Suia o Lau Upu Pasi.....	3
Pe a Faato'a Amata (First Login)	3
Fa'aaogaina ole ParentConnection	4
Ile Su'eina ose Tamaititi A'oga	4
Ile Mauaina o Faamatalaga Eseese o loo Avanoa.....	4

E Faapefea le Fa'aogaina ole ParentConnection

Afio Mai Matua!

O leni meafaigaluega ole a fesoasoani lea ia te oe ile faato'a amataina (log into) ma le fa'aogaina ole ParentConnection, faapea ai vaega eseese ole ParentConnection ole a aoga tele ia te oe ile sailia poo gasolo lelei le tulaga o lou alo, ma fa'auau ai se fesoasoani mo le fanau ina ia latou aga'iga'i i luma ile aoga.

Mana'oga Tau-Komipiuta

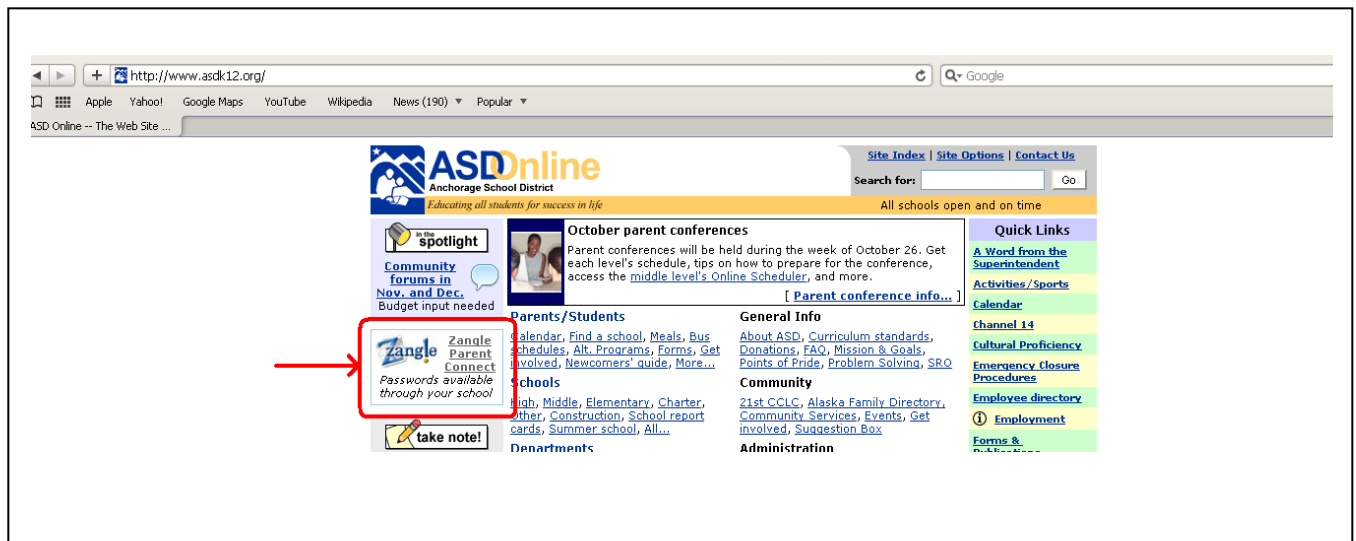
E mafai ona e fa'aogaina le ParentConnection e ala i polokalama Komipiuta nei:

- Ose komipiuta Windows ae iai le XP, Vista poo le Windows 7, poo se Apple ae iai le Mac OS 10.2 pe sili atu.
- Ose uaea fesoota'i DSL poo se cable agai ile initeneti.
- Poo se tasi o nei vaega su'e mataupu (web browsers):
 - Internet Explorer version 6.0 pe sili atu
 - Firefox version 2.0 pe sili atu
 - Chrome version 2.0 pe sili
 - Safari version 2.0 pe sili atu

Ole Mauaina ole ParentConnection & Faato'a Amataina (logging in)

Laasaga 1

Ina ia maua le ParentConnection, faamolemole asiasi ile <http://www.asdk12.org> ma kiliki loa ile **Zangle ParentConnect** o loo ile navigation sidebar o loo lata ane ile pito i luga ole itūtamatau ole ASD Online homepage. E mafai fo'i ona e alu sa'o ile ParentConnection pe a e taina ile Internet browser le: <https://parentconnect.asdk12.org/> (maitau le "s" o loo mulimuli ile http).



Ole a aliali mai se faamalama e ulu atu ai (**Login window**) ile ParentConnection.

Laasaga 2

Ta iai lau **PIN** ma le **Upu Pai (Password)** na e maua mai ile a'oga a lou alo.

Ona, kiliki lea ole **Logon**



*****TAUA TELE:** E tatau ona e **faatagaina pop-ups** mo leni vaega (site) i lau web browser initeneti.

Suia o lau Upu Pasi (Password)

Pe a faato'ā Amataina (At First Login)

TAUA TELE! – O Tagata Asiasi Fou e Faamalosia le Suia o lau Upu Pasi!

A faapea o lau taimi muamua leni ile fa'aaogaina ole ParentConnection, o le a faamalosia le suia o lau upu pasi mai le upu pasi lē tumau na avatu e le a'oga a lou alo. O le a vaaia vave se faamalama e sui ai upu pasi (Change Password Window) pe a e login ma o le a le mafai ai ona e fa'auau vagana ua e faia sau upu pasi fou.

Ta i lalo lau **Upu Pasi o loo Fa'aaoga Nei (Current Password)** e fai ma faamaoniga.

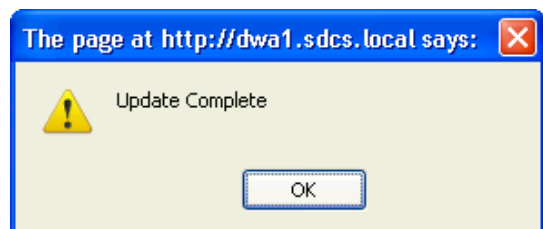
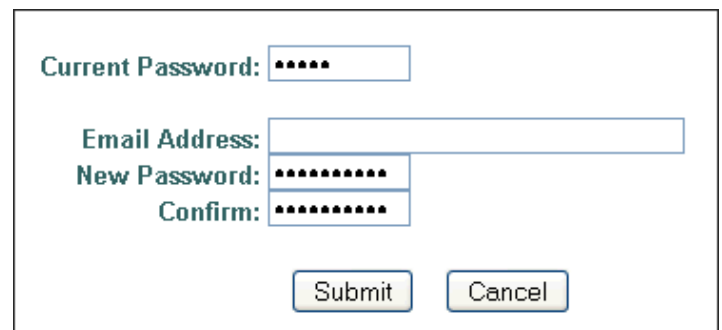
Ta iai lau **Upu Pasi Fou (New Password)**.

Toe ta iai le **Faamautinoa(Confirm)**.

(O upu pasi e tatau ona sa'o le tetele poo le laiti o mata'itusi)

Kiliki le **Submit**.

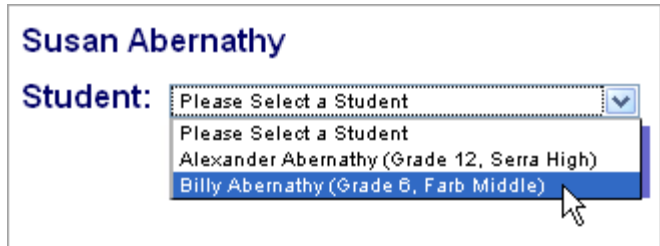
Ole a aliali mai ai le faamalama **Ua Mae'a Faamatalaga Fou (Update Complete)**. Kiliki le **OK**.



Fa'aaogaina ole ParentConnection

Ile Su'eina ole Tamaititi Aoga

Afai e sili atu nai loo le tasi le tamaititi ole Itumalo Aoga e mafai ona e mauaina faamatalaga ile fa'aaogaina ole ParentConnection, filifili poo ai le tamaititi e te fia mauaina faamatalaga, ona alu lea ile faasologa o Tamaiti o loo ile ituagavale ole faamalama. E faatagaina e le Zangle ParentConnection oe e te fesuisuia'i ile va o faamatalaga o tamaiti nei aunoa ma lou tau alu i fafo poo totonu o lenei vaega.



Ile Mauaina o Faamatalaga Eeseese o loo Avanoa

E mafai ona e mauaina faamatalaga e faatatau i tamaiti aoga pe a kiliki i fesoota'iga (links) o loo lisi mai ile ituagavale ole faamalama.

[News](#)

News/Tala Fou – O lenei itulau e te mauaina ai ni faasilasilaga faapitoa mai ile aoga faapea le vasega.

[Demographics](#)

Demographics/Temokarafi – Vaai faamatalaga temokarafi a lou alo. Atonu e mafai ona e toe iloilo poo iai ile aoga faamatalaga sa'o lata mai nei. [Uia auala masani ale a'oga e tusa ai ma le toe faasa'oina o nei faamatalaga fou.](#)

[Contacts](#)

Contacts/Tagata e Faafesoota'ia – O lenei itulau o loo ta'ua ai tagata e ao ona faafesoota'ia, e aofia ai matua poo tausitama, faapea pe a iai ni faalavelave faafuase'i. Atonu e mafai ona e toe iloilo poo iai ile aoga faamatalaga sa'o lata mai nei. [Uia auala masani ale a'oga e tusa ai ma le toe faasa'oina o nei faamatalaga fou.](#)

[Schedule](#)

[Attendance](#)

[Assignments](#)

[Marks](#)

[Standards](#)

[Testing](#)

Schedule/Faasologa – O lenei itulau o loo lisi atu ai le faasologa o mataupu a lou alo i lana vasega.

Attendance/Tia'i A'oga – O lenei itulau o loo ta'ua ai faamatalaga t'ua e faatatau pe na iai ni tia'i aoga a lou alo. [Faafesoota'i le aoga a lou alo pe a iai ni fesili e faatatau i nei faamatalaga.](#)

Assignments/O Galuega Aoga – O iinei e mafai ona e vaai ai le taumafaiga a lou alo ile latou vasega. O lenei itulau e fa'aalia ai galuega aoga lata mai nei. A e kiliki ile **Faaalia Galuega Aoga Uma (Show All Assignments)** ile pito i luga ole tulimanu tauagavale, ole a mafai ona e vaai ai galuega uma. O galuega o loo lanu **mūmū**, o galuega ia e le'i maua mai. Manatua, e na'o faiaoga o loo faaogaina le polokalama **Zangle GradeBook** e mafai ona e maua ai nei togi. [O le a e vaai se vaega o nei mataupu ta'itasi ma le taimi o loo faatatau iai togi ole tausaga.](#)

Class Assignments for 10/15/2009 - 10/29/2009								
Period: 2 Asia Studies			Teacher: ██████████					
Current Grade For Quarter 2: Not Available			Print Progress Report					
No Assignments To Display								
Period: 2 Asia Studies			Teacher: ██████████					
Current Grade For Quarter 1: B			Print Progress Report					
Detail	Date Due	Assignment	Pts Possible	Score	Scored As	Extra Credit	Not Graded	Comments
	10/15/2009	Religion Study Questions	10	9				
	10/15/2009	Religious Comparison	5	5				

Marks/Togi/Sikoa – Ole a fa’aalia atu i lea faamalama lisi o togi/sikoa ole ripoti mo lenei tamaititi aoga i tausaga aoga o loo iai o iai iinei. Mo se fesoasoani ile faitauina o nei faamatalaga faamolemole vaai ane ile itulau 34 ole tusi faatonu ale Zangle (Zangle Manual) o loo i lalo ole vaega [Help](#) ile pito i luga ole tulimanu itutamatau ole faamalama ParentConnect.

Standards/Faatulagaga – o loo Fa’aaoga i le taimi nei e le Itumalo Aoga a Anchorage lenei vaega e fa’aalia ai Pepa Ripoti a le Fanauiti o loo ile Aoga Amata (Kindergarten) faapea ai ma a latou Uiga Galue Masani (Work Habits) ua ta’ua mai ise vaega ole Ripoti Aoga.. E mafai ona e mauaina se faamatalaga e faatatau i lea vaega fa’aalia ile itulau 35 & 36 ole tusi faatonu ale Zangle (Zangle Manual) o loo i lalo ole [Help](#) ile pito i luga ole tulimanu itutamatau ole faamalama ParentConnect window.

Testing/Su’ega – O le a fa’aalia atu iinei togi/sikoa a lou alo i su’ega masani. Faafesoota’i le aoga a lou alo pe a iai ni fesili e faatatau i lenei mataupu.