

Katmai Team



Welcome Zoom!
March 26, 2020

We are so happy to “see” you!

General Zoom Etiquette

- You are being monitored!
- Be aware of your background
- Raise your hand to speak
- Dress appropriately, you are at school!
- You may turn off your video if you need to
- Be your best self! (Thoughtful and considerate)





Language Arts and Math



- Classes begin March 31st, using APEX - but logging in through Canvas
- Due dates on Fridays of each week to help pace
- OK to work ahead, but we are planning to return to school in May; you will still be expected to do that assigned work
- Custom activities = course info
- Study guides = guided note-taking, print out/copy down to use on quizzes!
- Quiz scores are graded; at least 60% to move on, 2 attempts



Language Arts - English 7

4 Units



Unit 3: Reading Strategies




Unit 4: Analyzing Nonliterary Texts

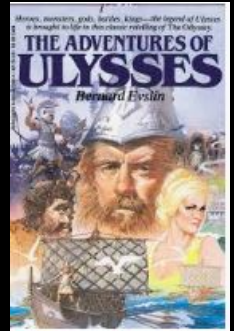


Unit 6: Sentence Structure



Unit 8: Writing

- Language Arts 7 and Language Arts 7 Advanced classes are now both called English 7.
- Ulysses books will be collected when we are given word that is ok. Please don't lose yours! 



Math 7/M7I

- 4 Units



Unit 6: Geometric Figures



Unit 7: Geometry in Two and Three Dimensions



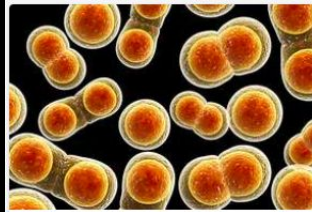
Unit 8: Statistics and Sampling



Unit 9: Probability

Pre-Algebra

- 7 Units



Unit 1: Exponents



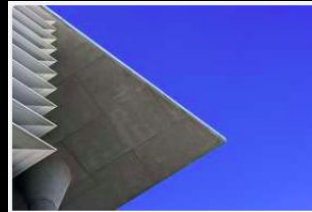
Unit 2: Solving Equations with Roots and Powers



Unit 4: Linear Equations



Unit 5: Systems of Linear Equations



Unit 6: Distance and Angles



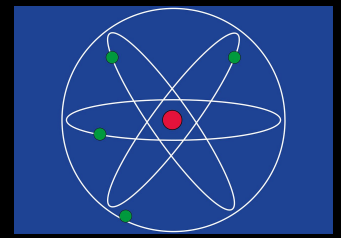
Unit 7: Area, Surface Area, and Volume



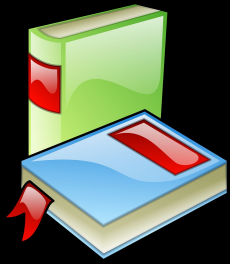
Unit 8: Data Analysis and Probability



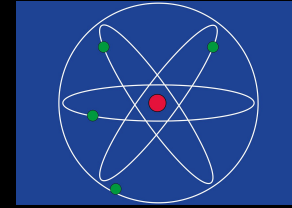
Social Studies & Science



- We will start classes April 6th
- We will be using Canvas as our learning platform
- You will be given more information as it comes. Your focus right now is on Math and ELA. We are all here to support you!
- If you would like, you can still check out the supplemental science learning links on Ms. Jilka's website.



NEED HELP?



TENTATIVE Office Hours

This is the information we have right now. It may change!

Mondays, Wednesdays, Fridays

- Math: 10 - 11 A.M.
- Language Arts: 11 A.M.- 12 P.M.
- Science: 12 - 1 P.M.
- Social Studies: 1 - 2 P.M.

Remember you can always e-mail us!



KATMAI REMIN



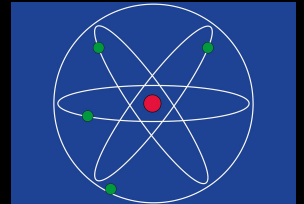
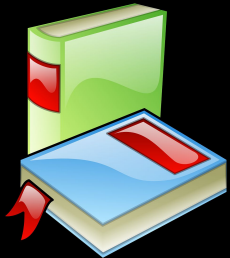
Another way we would like to be able to get information to you quickly is through the Remind app. used by many teachers and coaches at GMS. There are two ways to sign in.

Don't worry - we will email this out to you!

<https://www.remind.com/join/3bhh8g>

Or

Text @3bhh8g to 81010



Closing Info

- Remember we are all in this together
- Wash your hands
- Stay home
- Practice social distancing when necessary
- We miss you!



Q & A



- Gallery view
- Participants features
 - Raise hand
 - Yes/No
 - Thumbs up/down
 - Be sure to undo action when done
- Chat box
- Zoom with friends!