

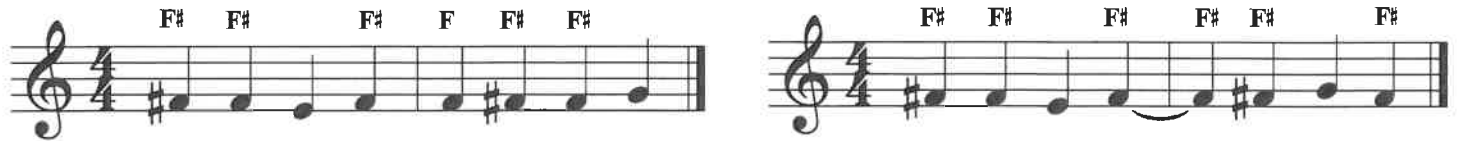
Sharps, Flats and Naturals

A **natural** sign (♮) placed before a note cancels a sharp or flat.

Sharps, flats and naturals are all called **accidentals**.

Accidentals affect every note on the same line or space for the remainder of the measure.

Bar lines cancel all accidentals from the previous measure unless a note is tied across the bar line.



A natural is used to cancel sharps and flats.



Write the name of each note.

